



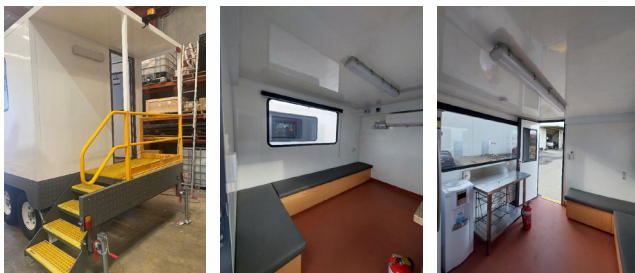
**ACCUMAX**  
SAFETY

# Solar Powered Hydration Trailer



The Australian climate is a harsh environment and can make for challenging work conditions if personnel cannot maintain proper hydration and cooling.

We have designed and developed the first solar powered hydration trailer, essential for promoting the health, safety and well-being of individuals working in hot conditions. The trailer is designed to be placed in operational areas to provide suitable respite during periods of high temperatures close to the worksite.



## Product Features

- Solar powered (6 x 400W panels)
- Stainless 900mm benchtop
- Bottle rack to accommodate 4 x 20 ltr bottles
- Single door fridge/freezer 220ltr
- High-vis mine site compliant striping
- Air conditioning
- Tinted windows with roller blinds
- Personal access door
- Rear access with platform and handrails and fold out steps

Suitable to accommodate the cooling and hydration full product range.

**SKU:** CW-SPHT01



**ACCUMAX**  
GLOBAL

1300 222 862 | [sales@accumax.com.au](mailto:sales@accumax.com.au)  
58 Catalano Circuit, Canning Vale WA 6155  
[accumaxglobal.com.au](http://accumaxglobal.com.au)

# Solar Powered Hydration Trailer

## Chassis

- RHS 4500 x 2300mm (suitable for road use)
- 50mm ball hitch
- Safety chains
- Front wind down drawbar stand
- Four (4) stabilising legs (caravan type) or
- Optional automatic leveling system
- Electric drum brakes with breakaway protection
- ElecBrake remote brake control system
- RIMS – Steel 16" x 7", 6 stud pattern
- Tyres – BF Goodrich K02
- Wheel nut indicators
- Wheel chocks and brackets
- Four (4) off tie down points for use during strong winds
- Tail-lights. (low and high level)
- Clearance lights. (4 off amber/red and 2 off white)
- Reflectors. (amber and white)
- Number plate light
- Trailer lighting plug with removable cable

## Electrical (LV)

- 1 off 15A 56 series power inlet connection with RCD
- 1 off 10A 56 series power outlet
- 1 off 10A GPO connected to inverter
- 1 off battery charger

## HVAC

- 2 off Dometic RTX 24V roof mounted air conditioners

## ELV Electrics

- 6 off 400W solar panels
- 1 off Victron Smart Solar Regulator
- 1 off 24v 912 ah battery pack
- Isolators and breakers
- Lockable battery isolator
- Lockable isolators for a/c units
- Internal lights with switch
- GME marine audio system

- GME box speakers
- Front and rear external lights (providing 10m coverage)

## Body

- Ceiling fabricated from 40mm Elycold panels
- Walls fabricated from 30mm Elycold panels
- Base flooring is 25mm Thermolite composite flooring
- Internal flooring is Armstrong non-slip vinyl flooring with 100mm coving
- One (1) Personnel Access (PA) Door with a small, double-glazed window, a door stopper and holder, rubber dust seals and a self-returning latching system. PA door opens inwards and is fitted with marine grade handles and hinges. The doors are fabricated from welded marine grade aluminium and powder coated. The door paneling is the Elycold panel
- Two (2) tinted windows with block out roller binds (charcoal). The windows are fabricated from welded marine grade aluminium and powder coated
- A covered rear access platform with handrails with a set of fold out steps. The steps will have nonslip nosing

## Internal Fit Out

- 4.5m L shape bench seat with optional inbuilt drawers
- 900mm stainless benchtop
- 900mm backing board to allow for securing to wall without damaging walls
- One (1) 20lt bottle rack (4 off water bottles). The rack will be designed and fabricated to be incorporated into the shelf
- One (1) single door fridge / freezer approximate 220ltr. The fridge / freezer is secured down to non-vibration base mount using releasable straps

## Signage and Decals

- Decals on 2 sides
- "Hydration Trailer" decals on each side
- Hi vis striping
- Operational decals

