



**ACCUMAX**  
SAFETY

# Dropped Object Prevention System



BARRIERSafe safety panelling is designed specifically to prevent Dropped Objects in your work place. Its patented design fits a wide range of handrail systems and has been developed to *AS1657 - 2013 Fixed platforms, walkways, stairways and ladders— design, construction and installation.*

BARRIERSafe is engineered to:

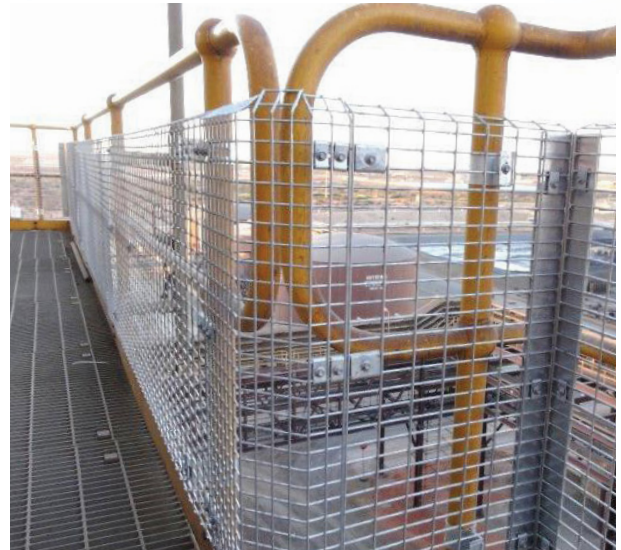
- Prevents injury from Dropped Objects
- Prevents personnel leaning through, standing or stepping onto handrails
- Promotes 3 points of contact whilst using the handrail
- Installs to your platforms and stairs within the safety of your existing handrails

The safety panel system maintains the existing handrail integrity and can be quickly and easily removed as required.

BARRIERSafe has been specifically designed for industrial applications and will provide lasting safety in harsh environments.

## FEATURES

- Safer working environment
- FAST, SAFE & easy to install
- Economical
- Flexible mesh panel design
- Retro fitted to existing stanchions
- No drafting required
- No site surface preparation
- No site welding or hot-works



BARRIERSafe provides full coverage along the total length of your handrail system.

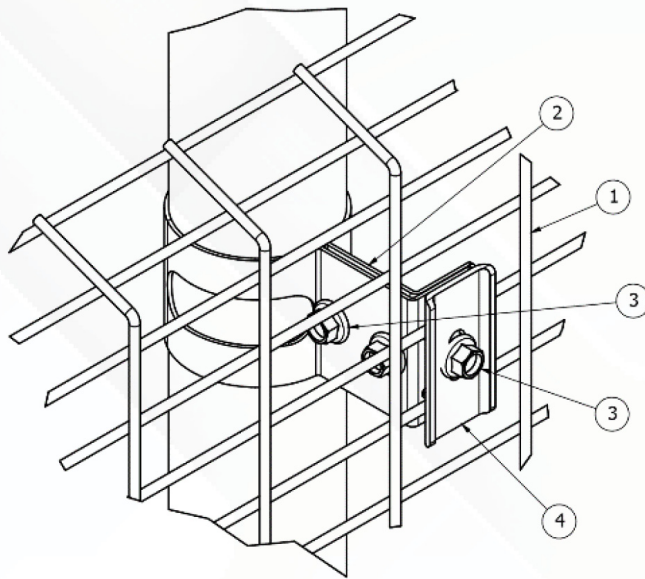


**ACCUMAX**  
GLOBAL

1300 222 862 | [sales@accumax.com.au](mailto:sales@accumax.com.au)  
58 Catalano Circuit, Canning Vale WA 6155  
[accumaxglobal.com.au](http://accumaxglobal.com.au)

# Specification Sheet

## BARRIER Safe Dropped Object Prevention System



- 1 Wire Mesh Panel
- 2 Stanchion/Midrail Clip
- 3 Hex Washer Head Screw
- 4 Retaining Washer

Specifications			
<b>Wire Mesh Panel</b>			
<b>Material</b>	Hard Drawn Truform Steel Weld Mesh	<b>Finish</b>	Hot Dip Galvanised to AS4680 Table 1
<b>Open Dimension</b>	25mm x 50mm x 3.15mm	<b>Weight</b>	7.25kg - Horizontal 5.47kg - Inclined
<b>Over All Dimension</b>	2400mm x 755mm - Horizontal 2400mm x 555mm - Inclined	<b>Tensile Strength</b>	550 - 850MPa
<b>Stanchion/Midrail Clip</b>			
<b>Material</b>	Steel AS1594 HA300	<b>Finish</b>	Hot Dip Galvanised to AS4680 Table 2
<b>Dimension</b>	1.2mm Thick	<b>Weight</b>	0.1kg/0.09kg
<b>Hex Washer Head Screw</b>			
<b>Style</b>	Screw SDM Hex Class 3	<b>Weight</b>	0.6kg/100
<b>Size</b>	12Gx14x30 Class 3 AS3566.1		
<b>Retaining Washer</b>			
<b>Material</b>	Hot Rolled Carbon Steel AS1594 Grade HA350	<b>Finish</b>	Hot Dip Galvanised to AS4680 Table 2
<b>Dimension</b>	48mm x 25mm x 2.0mm Thick	<b>Weight</b>	1.9kg/100

