



ACCUMAX
SAFETY

ClampSafe



SKU: MAX-SSCC

The ClampSafe coupler cover has been refined through field testing to allow hoses to be pulled along walkways, around corners and upstairs without the hook ups. The ClampSafe cover is made from a 100% recyclable highly durable material which is UV stabilised to handle the toughest conditions.

The ClampSafe coupler cover will reduce hose hook ups occurring during equipment washdowns. The simple, yet innovative design removes the need for technicians to pull harder on the hose to release the hook up or to flick the hose to free the coupler.

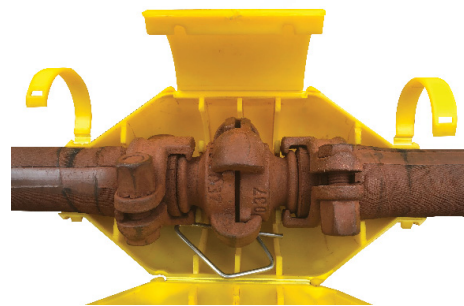


The ClampSafe has been optimised to fit the 1.0" SureLock Minsup coupler type "A" and will also accommodate a single safety pin. It can be removed to change hose lengths and reconnected to the coupler.

The ClampSafe incorporates a self-locking mechanism which when clipped into place ensures a tight fit.

The ClampSafe coupler cover reduces:

- The risk of hose technician musculoskeletal injuries
- Containment of high pressure blowout through coupler
- Stress and frustration to workers
- Damage to plant and equipment caused by pulling excessively on a hooked up hose.



The ClampSafe cover requires no assembly or special tools to attach – simply clip it on to the coupler.



ACCUMAX
GLOBAL

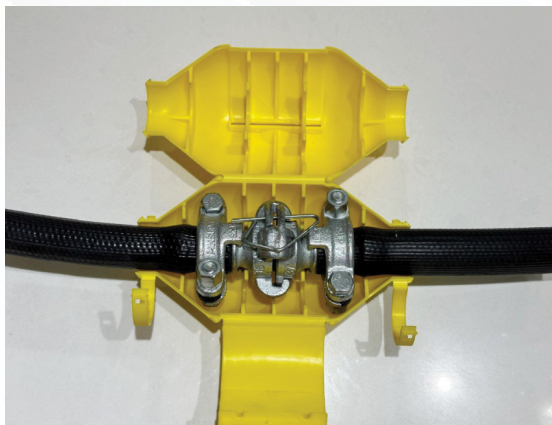
1300 222 862 | sales@accumax.com.au
58 Catalano Circuit, Canning Vale WA 6155
accumaxglobal.com.au

Installation Instructions: ClampSafe

INSTALLATION

This cover is designed to fit a 1.0" Hose or smaller with Surelock Minsup coupler or Type "A" Minsup coupler.

1. ClampSafe cover placed underneath Minsup hose coupler.

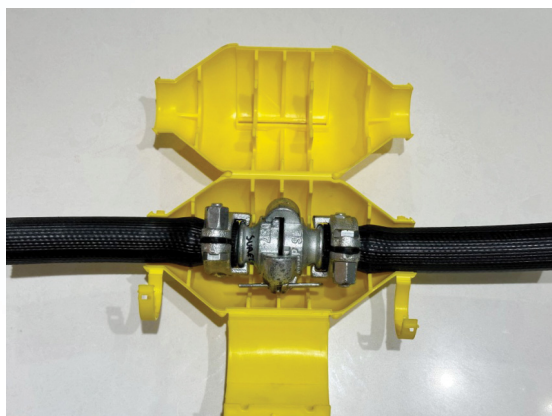


3. Close cover and clip main locking flap and end clips securely.



2. Rotate hose or ClampSafe cover to allow locking clip to fall into side cut out of cover.

Cover will not close until safety clip is in side cut out.



Note: Main locking flap has an initial closed position and when pressed firmly will snap into final locked position.

To open main flap a flat screwdriver may be required to lever open.



ACCUMAX
GLOBAL

1300 222 862 | sales@accumax.com.au
58 Catalano Circuit, Canning Vale WA 6155
accumaxglobal.com.au