



# Barriers and Barricades

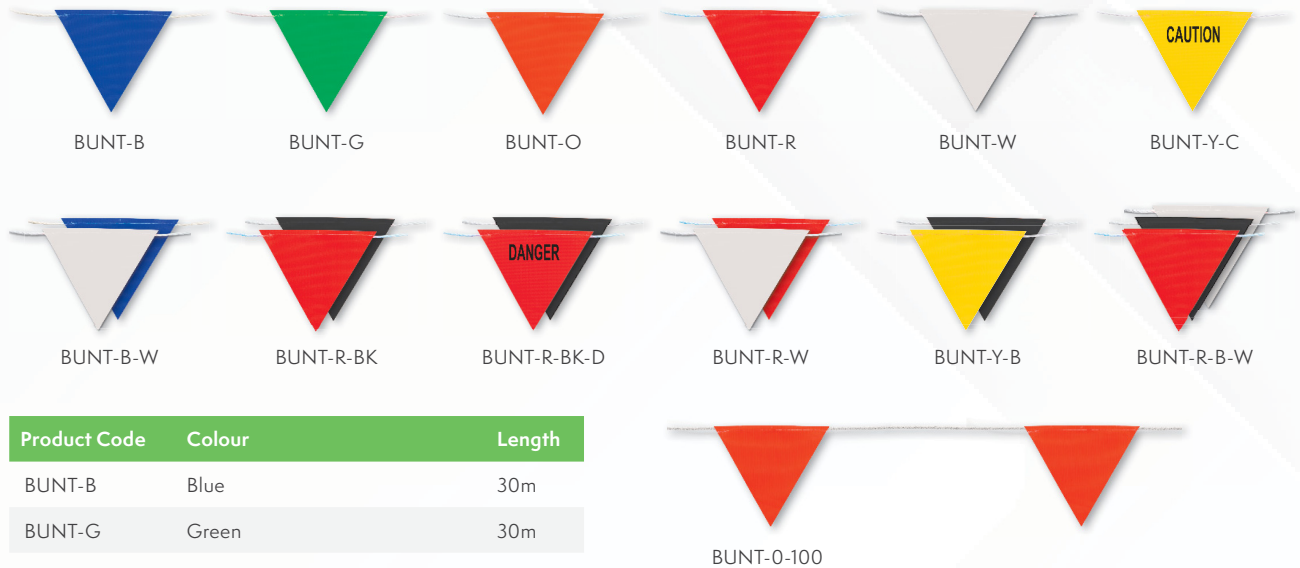
EDITION 1

# Contents

<b>Site Safety.....</b>	<b>3</b>
Flag Bunting Rolls.....	3
Barrier Mesh.....	3
Retractable Cone Bars.....	3
Retractable Barrier Tape.....	3
<b>Retractable Safety Reels.....</b>	<b>4</b>
5m Retractable Safety Reel.....	4
9m Retractable Safety Reel.....	5
15m Retractable Safety Reel.....	6
20m Retractable Safety Reel.....	7
<b>Reel &amp; Tape Accessories .....</b>	<b>8</b>
Replacement Tapes .....	8
Retractable Safety Reel Attachments.....	9
Retractable Safety Reel Support Stand.....	9
<b>BARRIERSafe Dropped Object Prevention System.....</b>	<b>10</b>
BARRIERGuard.....	11
BARRIERStep .....	12
BARRIERTread .....	12
<b>Skipper .....</b>	<b>13</b>
Skipper Unit.....	13
Skipper XS Unit.....	13
Wall & Magnetic Support Brackets.....	13
Wall & Magnetic Receiver Clip.....	14
Skipper Cord Strap Clips.....	14
Suction Pad Holder/Receiver.....	14
Rechargeable Safety Light .....	15
Sanitiser Bracket .....	15
A4 Sign Holder.....	15
Post and Base System.....	15
<b>Barricades .....</b>	<b>16</b>
Heavy Duty Barricade A-Frame .....	16
Lightweight Fibreglass Barricade Poles.....	16
Barricade Trailer .....	16
<b>Expanding Barrier.....</b>	<b>16</b>

# Site Safety

## Flag Bunting Rolls



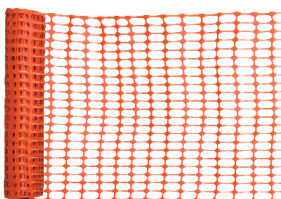
Product Code	Colour	Length
BUNT-B	Blue	30m
BUNT-G	Green	30m
BUNT-O	Orange	30m
BUNT-R	Red	30m
BUNT-W	White	30m
BUNT-Y-C	Yellow with CAUTION printed	30m
BUNT-B-W	White/Blue	30m
BUNT-R-BK	Red/Black	30m
BUNT-R-BK-D	Red/Black with DANGER printed	30m
BUNT-R-W	Red/White	30m
BUNT-Y-B	Yellow/Black	30m
BUNT-R-B-W	Red/Black/White	30m
Bunt-O-100	Orange	100m

## Retractable Cone Bars



Product Code	Description	Span
RCB-BY	Black/Yellow Retractable Cone Bar	1.2m - 2.1m
RCB-RW	Red/White Retractable Cone Bar	1.2m - 2.1m

## Barrier Mesh

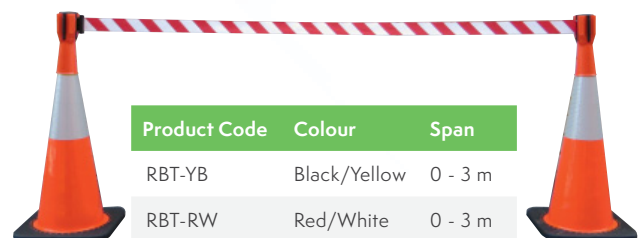


The Barrier Mesh is made from UV stabilised HDPE for durability.

The re-useable Barrier Mesh, Orange is perfect for controlling pedestrian and vehicle traffic around temporary hazards.

Product Code	Description	Colour	Size
BM01	Barrier Mesh	Orange	1m x 50m

## Retractable Barrier Tape



Product Code	Colour	Span
RBT-YB	Black/Yellow	0 - 3 m
RBT-RW	Red/White	0 - 3 m
RBT-YB-9	Black/Yellow	0 - 9 m
RBT-RW-9	Red/White	0 - 9 m

# Retractable Safety Reels

## 5m Retractable Safety Reel

The 5m Retractable Safety Reels are small, light & easy to install for smaller accessways and walkways. Ideal for garages & staircases.

The reel consists of a UV stable polypropylene housing, high quality, super durable woven fabric tapes that can be replaced when necessary. All models come standard with 316 marine grade stainless steel fixings & snap hook.

### FEATURES:

- » Polypropylene housing, high strength & UV stable
- » 316 marine grade stainless steel fixings & hook
- » Fully replaceable woven fabric tapes
- » Positive tensioning or ratchet positioning

Product Code	Colours	Description
MAX-RSB5-LG	Lime Green	
MAX-RSB5-LGB	Lime Green & Black	
MAX-RSB5-RW	Red & White	
MAX-RSB5-Y	Yellow	
MAX-RSB5-YB	Yellow & Black	
MAX-RSB5-CAU	Yellow & Black	CAUTION
MAX-RSB5-CROP	Red & White	DANGER - CRANE OPERATIONS
MAX-RSB5-DNE	Red & White	DANGER - DO NOT ENTER
MAX-RSB5-DNER	Red & Silver Reflective	DANGER - DO NOT ENTER
MAX-RSB5-NS	Red & White	DANGER - FLAMMABLE LIQUID - NO SMOKING
MAX-RSB5-FOA	Red & White	DANGER - FORKLIFT OPERATING AREA
MAX-RSB5-HV	Red & White	DANGER - HIGH VOLTAGE
MAX-RSB5-SIP	Red & White	DANGER - SCAFFOLDING IN PROGRESS
MAX-RSB5-WAH	Red & White	DANGER - WORKING AT HEIGHTS EXCLUSION AREA
MAX-RSB5-AAO	Red & White	NO ENTRY AUTHORISED ACCESS ONLY
MAX-RSB5-RAD	Yellow	RADIATION



**DIMENSIONS:** 250mm x 200mm x 100mm

**WEIGHT:** 1.9kg

**TAPE TENSION:** 3.75kg



### Add Magnetic Mount Kit

#### INCLUDES

- » 2 x 88/8mm encapsulated magnetic mounts
- » 1 x 66/8mm encapsulated receiver / SS316 eyelet
- » 1 x 85cm safety wire with carabiner

**PRODUCT CODE:** MAX-RSB5-9-MM



### Add Pole Mount Kit

#### INCLUDES

- » 1 x 48-51mm quick release aluminium pipe clamp
- » 1 x 85cm safety wire with carabiner

**PRODUCT CODE:** MAX-RSB5-9-PC



# 9m Retractable Safety Reel

The 9m Retractable Safety Reel is the perfect choice when a longer tape is needed yet a compact design is required for smaller areas & accessways.

The reel consists of a UV stable polypropylene housing, high quality, super durable woven fabric tapes that can be replaced when necessary. All models come standard with 316 marine grade stainless steel fixings & snap hook.

## FEATURES:

- » Polypropylene housing, high strength & UV stable
- » 316 marine grade stainless steel fixings & hook
- » Fully replaceable woven fabric tapes
- » Positive tensioning or ratchet positioning

Product Code	Colours	Description
MAX-RSB9-LG	Lime Green	
MAX-RSB9-LGB	Lime Green & Black	
MAX-RSB9-RW	Red & White	
MAX-RSB9-Y	Yellow	
MAX-RSB9-YB	Yellow & Black	
MAX-RSB9-CAU	Yellow & Black	CAUTION
MAX-RSB9-CROP	Red & White	DANGER - CRANE OPERATIONS
MAX-RSB9-DNE	Red & White	DANGER - DO NOT ENTER
MAX-RSB9-DNER	Red & Silver Reflective	DANGER - DO NOT ENTER
MAX-RSB9-NS	Red & White	DANGER - FLAMMABLE LIQUID - NO SMOKING
MAX-RSB9-FOA	Red & White	DANGER - FORKLIFT OPERATING AREA
MAX-RSB9-HV	Red & White	DANGER - HIGH VOLTAGE
MAX-RSB9-SIP	Red & White	DANGER - SCAFFOLDING IN PROGRESS
MAX-RSB9-WAH	Red & White	DANGER - WORKING AT HEIGHTS EXCLUSION AREA
MAX-RSB9-AAO	Red & White	NO ENTRY AUTHORISED ACCESS ONLY
MAX-RSB9-RAD	Yellow	RADIATION



**DIMENSIONS:** 250mm x 200mm x 100mm

**WEIGHT:** 1.9kg

**TAPE TENSION:** 4.75kg



## Add Magnetic Mount Kit

### INCLUDES

- » 2 x 88/8mm encapsulated magnetic mounts
- » 1 x 66/8mm encapsulated receiver / SS316 eyelet
- » 1 x 85cm safety wire with carabiner

**PRODUCT CODE:** MAX-RSB5-9-MM



## Add Pole Mount Kit

### INCLUDES

- » 1 x 48-51mm quick release aluminium pipe clamp
- » 1 x 85cm safety wire with carabiner

**PRODUCT CODE:** MAX-RSB5-9-PC

# 15m Retractable Safety Reel

The 15m Retractable Safety Reel's larger size allows for longer tapes with positive tensioning that ensures tapes don't sag or droop.

The reel consists of a UV stable polypropylene housing, high quality, super durable woven fabric tapes that can be replaced when necessary. All models come standard with 316 marine grade stainless steel fixings & snap hook.

## FEATURES:

- » Polypropylene housing, high strength & UV stable
- » 316 marine grade stainless steel fixings & hook
- » Fully replaceable woven fabric tapes
- » Positive tensioning or ratchet positioning
- » c/w slow retracting safety feature as standard

Product Code	Colours	Description
MAX-RSB15-LG	Lime Green	
MAX-RSB15-LGB	Lime Green & Black	
MAX-RSB15-RW	Red & White	
MAX-RSB15-Y	Yellow	
MAX-RSB15-YB	Yellow & Black	
MAX-RSB15-CAU	Yellow & Black	CAUTION
MAX-RSB15-CROP	Red & White	DANGER - CRANE OPERATIONS
MAX-RSB15-DNE	Red & White	DANGER - DO NOT ENTER
MAX-RSB15-DNER	Red & Silver Reflective	DANGER - DO NOT ENTER
MAX-RSB15-NS	Red & White	DANGER - FLAMMABLE LIQUID - NO SMOKING
MAX-RSB15-FOA	Red & White	DANGER - FORKLIFT OPERATING AREA
MAX-RSB15-HV	Red & White	DANGER - HIGH VOLTAGE
MAX-RSB15-SIP	Red & White	DANGER - SCAFFOLDING IN PROGRESS
MAX-RSB15-WAH	Red & White	DANGER - WORKING AT HEIGHTS EXCLUSION AREA
MAX-RSB15-AAO	Red & White	NO ENTRY AUTHORISED ACCESS ONLY
MAX-RSB15-RAD	Yellow	RADIATION



**DIMENSIONS:** 350mm x 280mm x 130mm

**WEIGHT:** 3.2kg

**TAPE TENSION:** 2.7kg

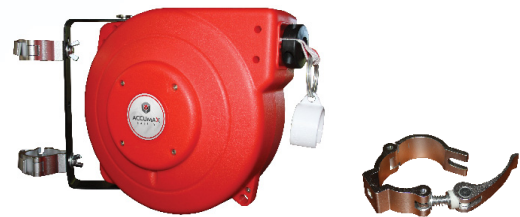


## Add Magnetic Mount Kit

### INCLUDES:

- » 3 x 88/8mm encapsulated magnetic mounts
- » 1 x 66/8mm encapsulated receiver / SS316 eyelet
- » 1 x 85cm safety wire with carabiner

**PRODUCT CODE:** MAX-RSB15-20-MM



## Add Pole Mount Kit

### INCLUDES:

- » 2 x 48-51mm quick release aluminium pipe clamp
- » 1 x 85cm safety wire with carabiner

**PRODUCT CODE:** MAX-RSB15-20-PC

# 20m Retractable Safety Reel

The 20m Retractable Safety Reels allow for 20m of tape to be extracted & safely used without the fear of the tape sagging due to the positive tensioning larger spring.

The reel consists of a UV stable polypropylene housing, high quality, super durable woven fabric tapes that can be replaced when necessary. All models come standard with 316 marine grade stainless steel fixings & snap hook.

## FEATURES:

- » Polypropylene housing, high strength & UV stable
- » 316 marine grade stainless steel fixings & hook
- » Fully replaceable woven fabric tapes
- » Positive tensioning or ratchet positioning
- » c/w slow retracting safety feature as standard

Product Code	Colours	Description
MAX-RSB20-BW	Blue & White	
MAX-RSB20-LG	Lime Green	
MAX-RSB20-LGB	Lime Green & Black	
MAX-RSB20-RW	Red & White	
MAX-RSB20-Y	Yellow	
MAX-RSB20-YB	Yellow & Black	
MAX-RSB20-CAU	Yellow & Black	CAUTION
MAX-RSB20-ECA	Blue & White Exclusive	EXCLUSIVE CONTROL AREA
MAX-RSB20-CROP	Red & White	DANGER - CRANE OPERATIONS
MAX-RSB20-DNE	Red & White	DANGER - DO NOT ENTER
MAX-RSB20-DNER	Red & Silver Reflective	DANGER - DO NOT ENTER
MAX-RSB20-NS	Red & White	DANGER - FLAMMABLE LIQUID - NO SMOKING
MAX-RSB20-FOA	Red & White	DANGER - FORKLIFT OPERATING AREA
MAX-RSB20-HV	Red & White	DANGER - HIGH VOLTAGE
MAX-RSB20-SIP	Red & White	DANGER - SCAFFOLDING IN PROGRESS
MAX-RSB20-WAH	Red & White	DANGER - WORKING AT HEIGHTS EXCLUSION AREA
MAX-RSB20-AAO	Red & White	NO ENTRY AUTHORISED ACCESS ONLY
MAX-RSB20-RAD	Yellow	RADIATION



**DIMENSIONS:** 350mm x 280mm x 130mm

**WEIGHT:** 3.4kg

**TAPE TENSION:** 2.7kg

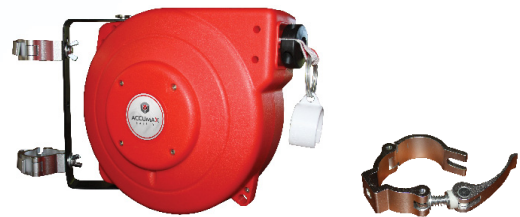


## Add Magnetic Mount Kit

### INCLUDES:

- » 3 x 88/8mm encapsulated magnetic mounts
- » 1 x 66/8mm encapsulated receiver / SS316 eyelet
- » 1 x 85cm safety wire with carabiner

**PRODUCT CODE:** MAX-RSB15-20-MM



## Add Pole Mount Kit

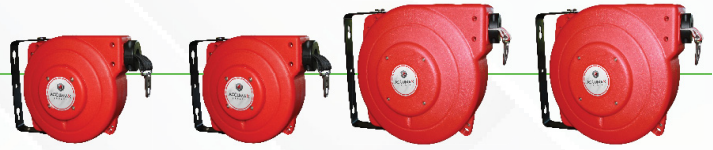
### INCLUDES:

- » 2 x 48-51mm quick release aluminium pipe clamp
- » 1 x 85cm safety wire with carabiner

**PRODUCT CODE:** MAX-RSB15-20-PC

# Reel & Tape Accessories

## Replacement Tapes



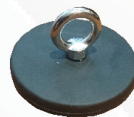
Tape Pattern		MAX-RSB5	MAX-RSB9	MAX-RSB15	MAX-RSB20
Blue & White - No Text					MAX-T20-BW
Lime Green - No Text		MAX-T05-LG	MAX-T09-LG	MAX-T15-LG	MAX-T20-LG
Lime Green & Black - No Text		MAX-T05-LGB	MAX-T09-LGB	MAX-T15-LGB	MAX-T20-LGB
Red & White - No Text		MAX-T05-RW	MAX-T09-RW	MAX-T15-RW	MAX-T20-RW
Yellow - No Text		MAX-T05-Y	MAX-T09-Y	MAX-T15-Y	MAX-T20-Y
Yellow & Black - No Text		MAX-T05-YB	MAX-T09-YB	MAX-T15-YB	MAX-T20-YB
CAUTION		MAX-T05-CAU	MAX-T09-CAU	MAX-T15-CAU	MAX-T20-CAU
EXCLUSIVE CONTROL AREA					MAX-T20-ECA
DANGER - CRANE OPERATIONS IN PROGRESS		MAX-T05-CROP	MAX-T09-CROP	MAX-T15-CROP	MAX-T20-CROP
DANGER - DO NOT ENTER		MAX-T05-DNE	MAX-T09-DNE	MAX-T15-DNE	MAX-T20-DNE
DANGER - DO NOT ENTER		MAX-T05-DNER	MAX-T09-DNER	MAX-T15-DNER	MAX-T20-DNER
DANGER - FORKLIFT OPERATING AREA		MAX-T05-FOA	MAX-T09-FOA	MAX-T15-FOA	MAX-T20-FOA
DANGER - SCAFFOLDING IN PROGRESS		MAX-T05-SIP	MAX-T09-SIP	MAX-T15-SIP	MAX-T20-SIP
DANGER - WORKING AT HEIGHTS EXCLUSION AREA		MAX-T05-WAH	MAX-T09-WAH	MAX-T15-WAH	MAX-T20-WAH
DANGER - FLAMMABLE LIQUID - NO SMOKING		MAX-T05-NS	MAX-T09-NS	MAX-T15-NS	MAX-T20-NS
RADIATION - KEEP OUT		MAX-T05-RAD	MAX-T09-RAD	MAX-T15-RAD	MAX-T20-RAD



# Retractable Safety Reel Attachments

We offer the complete range of accessories for our safety reels. When parts have become unusable due to age or other reasons, no need to throw out the entire unit.

Product Code	Description
MAX-NTE66-8R	1 x 66mm magnetic receiver SS316 Eyelet
MAX-RSB5-9-MM	1 x Magnetic mounting kit for RSB5/9 reels
MAX-RSB15-20-MM	1 x Magnetic mounting kit for RSB15/20 reels
MAX-PC50-1	Quick release pipe clamp & fixings
MAX-RSB5-9-PC	1 x Pipe clamp kit for RSB5/9 reels
MAX-RSB15-20-PC	1 x Pipe clamp kit for RSB15/20 reels
MAX-SNAPHOOK-1	1 x 50mm webbing snap hook SS316
MAX-SNAPHOOK-5	5 x 50mm webbing snap hooks SS316
MAX-SNAPHOOK-10	10 x 50mm webbing snap hooks SS316



Magnetic Receiver  
(All magnets are rubber encapsulated)



Quick Release Pipe Clamp  
(Stainless steel 316 fixings included)



Webbing Snap Hook

# Retractable Safety Reel Support Stand

Our Retractable Safety Reel Support Stands have been specifically designed to suit the Retractable Safety Reels.

Product Code	Description	Dimensions
MAX-SST01	Retractable Safety Reel Support Stand	1000mm H x 900mm W
MAX-SST02	Retractable Safety Reel Support Stand on Pneumatic Wheels	1250mm H
MAX-SST03	Retractable Safety Reel Stand with Fork Pockets & Hook	
MAX-50ALU-MM	50mm Safety Yellow Powder Coated Aluminium Stanchion with Magnetic Base & Reflective Bands	1500mm H



MAX-SST03

One of the main problems with retractable barriers is that the strong tension needed to make the barrier retract can often be too strong for the stand or cone being used to mount the barrier, leaving the barrier and cones or stands in a heap on the floor.

This is not an issue for our Retractable Safety Reel Support Stands, which can easily hold the tension of the Safety Reels. The stand is made from powder-coated metal and can be used with magnetic mounts or aluminum clamps. You can also daisy chain them together to cordon off machinery or areas.



MAX-SST01



MAX-SST02



MAX-50ALU-MM

# Dropped Object Prevention System

## BARRIERSafe

The BARRIERSafe Dropped Object Prevention Systems provide fast, flexible solutions for your safety needs. These systems will make your work environment a safer work place. Developed, designed and manufactured in Australia.

### Flexible Safety Solutions

- » Safer working environment
- » Fast, safe & easy to install
- » Economical
- » Flexible and comprehensive coverage
- » Flexible mesh panel design and colours
- » Retro fitted to existing stanchions
- » No drafting required
- » No site surface preparation
- » No site welding or hotworks

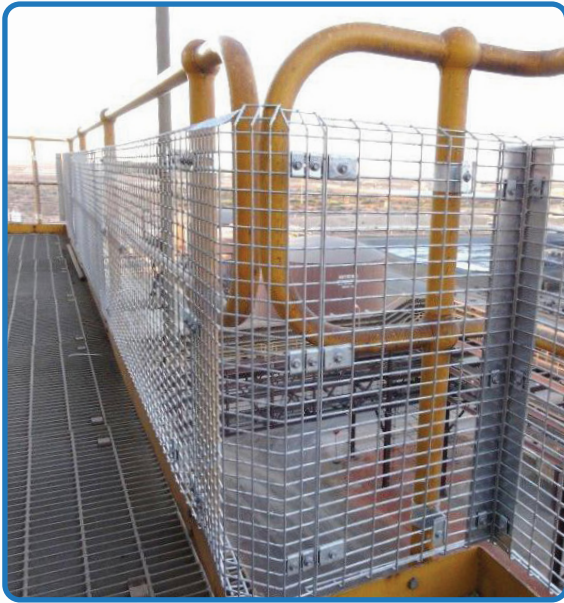
Our safety panel system maintains the existing handrail integrity and can be quickly and easily removed to provide vital access to areas for maintenance works.



## Filling the Gaps In Safety

BARRIERGuard™ provides full coverage along the total length of your handrail system.

BARRIERGuard™ safety panelling is retro fitted to your existing handrails. It adapts to all types of platforms, stairs and walkways.



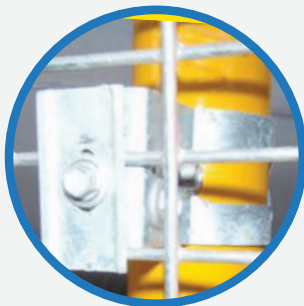
BARRIERGuard™ is safety engineered to:

- » Prevent injury from dropped objects.
- » Prevent personnel leaning through, standing or stepping onto handrails.
- » Maintain 3 points of contact during access and egress.
- » Be fitted entirely from inside the safety barriers of your platform or stairs.

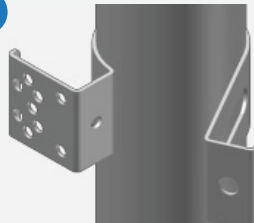


## BARRIERGuard™ Installation

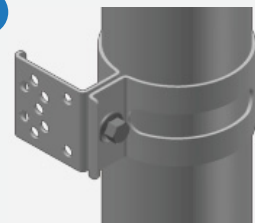
The key to the fast and safe installation of BARRIERGuard™ is our unique patented bracket design which accommodates various panels. Our brackets are engineered for maximum safety.



1



2



## Work in Complete Safety

BARRIERGuard™ has been specifically engineered to prevent dropped objects injuring workers below.

Our cutting edge designs mean no drafting or fabrication is required for any of our installations.

## Coverage and Strength

BARRIERGuard™ flexible design gives complete coverage, even for those often missed internal and external corners.

Our simple clamp system and our custom profiled mesh panels are designed to deliver additional strength and safety.

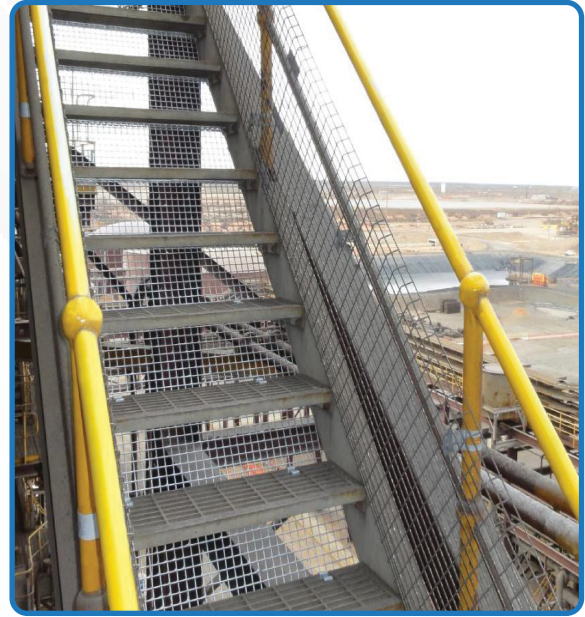


## BARRIERStep

### An Extra Step Towards a Safer Workplace

Fast, affordable and easy to install BARRIERStep™ plays an integral part, when combined with BARRIERGuard™, in reducing dropped object risks from open stairs and walkways.

“Our unique safety risers will reduce the opening between your existing steps.”



## BARRIERTread

### Minimise The Gaps In Your Safety Platform

BARRIERTread™ is a unique clamping & floor covering system designed to clip to your existing grid mesh floor. It allows for the fast and safe installation of many floor safety solutions.



### Hierarchy of Controls

BARRIERGuard™, BARRIERStep™ and BARRIERTread™ are substitution safety solutions and therefore are among the highest order of control practicable for existing plant.

By preventing objects being dropped from within the handrails and through the flooring and stairs, there is less reliance on the lower order of controls.

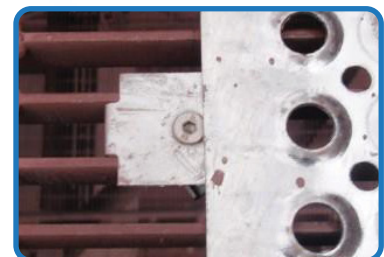
Barrier Mesh is quickly secured to the BARRIERTread™ clip, “Barricading areas above & below each platform level, preventing risk of injury from falling objects.”



### Installation Solutions

To ensure quality and safety, our “Dropped Object Prevention System” has the simplicity of a clip and clamp design to allow fast and correct installation in the most harsh and challenging environments.

Installation occurs with little or no interruption to your scheduled maintenance or production and within the safety of your existing handrails and platforms.



# Skipper

## Skipper Unit

Make any work area safer with Skipper – the original retractable safety barrier.

The Skipper unit is robust and dependable because of its high-specification materials and fabric tape. The versatile unit is used across a wide range of industries, from construction to airports and shipping, to events, retail, facilities management and many more.

Product Code	Description	Tape Colour	Tape Size	Dimensions	Weight
MAX-SK01-OBY	Skipper unit	Black & Yellow	9m	145x145x240mm	795g
MAX-SK01-ORW	Skipper unit - Orange	Red & White	9m	145x145x240mm	795g



MAX-SK01-ORW

## Skipper XS Unit

The Skipper XS range for indoor environments – can be connected to any indoor surface.

The unique XS range allows for connection to any indoor surface, from high gloss and glass, to worktops, shelving, door frames and pillars, making anything possible. The Skipper XS unit has the full 9 metres (30ft) of high-specification fabric tape. Its three connector points allow it to interface from various angles with its accessories.

Product Code	Description	Tape Colour	Dimensions	Weight
MAX-XS01-OBY	Skipper XS unit	Black & Yellow	145x145x126mm	800g
MAX-XS01-ORW	Skipper XS unit - Orange	Red & White	145x145x126mm	800g



MAX-XS01-ORW



MAX-XS01-OBY

## Wall & Magnetic Support Brackets

The Skipper Wall & Magnetic Support Brackets are ideal for situations where using a cone or post is not appropriate. The bracket is available in two versions; the wall version which can be screwed into place for permanent/semi-permanent use, and a non-marking magnetic version which can be attached to vehicles, shelving and other metal surfaces. Once the bracket is in the desired position, the Skipper unit snap-fits onto the bracket and locks into place.

The quick release clip prevents the Skipper unit from detaching from the bracket, and is also used to quickly disconnect the unit after use.

Product Code	Description	Dimensions
MAX-MSP01	Magnetic support bracket	124x133x168mm
MAX-WSP01	Wall support bracket	124x130x168mm



Wall Support Bracket with Skipper Unit



## Wall & Magnetic Receiver Clip

The receiver clips act as an end-point for Skipper retractable barriers.

Skipper wall and magnetic receiver clips attach retracting barriers to any surface. Simply pull out the tape from any Skipper or Skipper XS unit and slide it into the receiver clip. This will end the barrier without using additional Skipper units, cones or posts. Wall version requires 4 x screws (not included).

Product Code	Description	Dimensions	Weight
MAX-MRC01	Magnetic receiver clip	80x23x100mm	60g
MAX-WRC01	Wall receiver clip	80x23x100mm	45g



Wall Receiver Clip with Skipper Unit

## Skipper Cord Strap Clips

The cord strap clips utilise a robust bungee cord to tourniquet to structures such as pillars, trees and scaffolding. The clip is available in two variants; a non-marking magnetic version which is designed to attach to angular surfaces, and a curved version to fit securely to poles and cylindrical surfaces.

Receives Skipper tape end clips and holds Skipper XS unit to create a modular retractable barrier system. The cord strap clips are highly practical for indoor and warehouse environments, where they easily connect to shelving and pillars to both hold the Skipper XS unit and receive its tape end clip.

Product Code	Description	Weight
MAX-MCORD1-O	Magnetic Orange Cord Strap Receiver	85g
MAX-MCORD2-O	Curved cord strap holder/receiver - Orange	100g



MAX-MCORD1-O



MAX-MCORD2-O

## Suction Pad Holder/Receiver

The Skipper suction pad holder/receiver is designed for use with the Skipper XS unit and can both hold the unit in place and receive its tape end clip. It can also be used as a receiver clip for the standard Skipper unit. Simply position the suction pad onto a glass or high gloss surface and pull down the arm for an extremely strong connection.

Product Code	Description	Colour	Dimensions	Weight
MAX-SPAD-O	Suction Pad Holder/Receiver	Orange	117x78x45mm	65g



## Rechargeable Safety Light

This safety light is a multifunctional, LED system that attaches to Skipper and Skipper XS units. Can be switched between flashing or permanent-on mode, and also has an automatic low-light sensor (can be disabled).

The unit has an integrated rechargeable battery compartment that is powered by a standard DC adapter (not included). Simply twist off the Skipper or Skipper XS unit's top cap, and twist on the rechargeable safety light. Conforms to BS3143 part 2 1990. Uses 6 x AA batteries (not included).



The rechargeable safety light has a light sensor for automatic activation/deactivation or can be set to full manual control.

Product Code	Description	Dimensions	Weight
MAX-RSL	Rechargeable safety light	140x122x140mm	360g

## Sanitiser Bracket

The bracket is designed for areas where sun screens, sanitisers and other gels and creams are required, such as construction sites, hygienic environments and kitchens. The sanitiser bracket holds standard pump dispensers up to a diameter of 75mm.



Product Code	Description	Dimensions	Weight
MAX-SBR	Sanitiser bracket	90x80x109mm	60g

## A4 Sign Holder

The A4 Sign Holder is designed for use with both Skipper and Skipper XS units. It can be used to display health and safety signs, warnings, promotional messages and directions.

Simply insert your A4 message into the polycarbonate sleeve, and slide into the robust u-shaped frame. Twist off the Skipper or Skipper XS unit's top cap and twist the sign holder into position.



Product Code	Description	Dimensions	Weight
MAX-SIGN01	A4 sign holder	266x28x348mm	480g

## Post and Base System

Combine with the Skipper retractable barrier unit to create a post with retractable belt. The post and base system sleek design looks professional in any environment, both indoors and outdoors.

The base can be filled with water or sand for improved stability, and the post is twist-locked into position. The Skipper unit to the top of the post with a secure, snap fit.



Product Code	Description	Dimensions
MAX-POST01-O	Post - Orange	1m H
MAX-POST-B	Post Base	500mm L x 500mm W

# Barricades

MAXSafe Barricades are used to help direct traffic and pedestrian flow in many different applications. All are designed to be highly visible and durable to ensure that your job will be safe.

## Heavy Duty Barricade A-Frame

Product Code	Description	Colour
MAX-BPRAFRAME	Maxsafe Heavy Duty Barricade A-Frame	Red – with Reflective
MAX-BPYAFRAME	Maxsafe Heavy Duty Barricade A-Frame	Yellow – with Reflective



## Lightweight Fibreglass Barricade Poles

Product Code	Description	Colour	Dimensions
MAX-BP3BY	Maxsafe Lightweight Fibreglass Barricade Poles	Black/ Yellow	3250mm
MAX-BP3RW	Maxsafe Lightweight Fibreglass Barricade Poles	Red/ White	3250mm



## Barricade Trailer

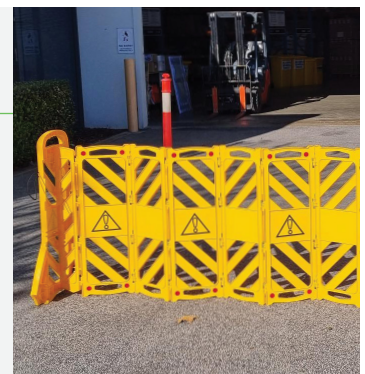
Product Code	Description	Dimensions
MAX-BPTRAILER	Barricade Trailer, Complete Set Up	3500mm L x 2400mm W



## Expanding Barrier

The Expanding Barrier can be set in either a straight, curved or circular position for indoor or outdoor applications. It folds to a slim footprint for convenient transport and storage.

**PRODUCT CODE:** EB39-Y



**ACCUMAX**  
GLOBAL

More safety barrier solutions and signage available.  
Contact us on **1300 222 862** or [sales@accumax.com.au](mailto:sales@accumax.com.au) to learn more.  
[accumax.com.au](http://accumax.com.au)