



MAXSafe[®]

SITE SAFETY

MAXBund[®] 

MAXSorb[®] 

MAXChock[®] 

TABLE OF CONTENTS

Fire Equipment and Accessories	2
Fire Extinguishers	4
SDS Holders	5
First Aid Kits	6
Site Safety Barriers	8
Site Safety	12
Scaffold Inspection Tag	14
Safety Stations	16
Vinyl Holder	17
Electrical and Asbestos Safety	18
MAXSafe™ Anti-slip	20
Standing and Kneeling Mats	22
Site Vehicle Safety	23

Our range of Site Safety products are sourced direct from leading global manufacturers, to ensure continuity of supply and maximum value on every product.

The MAXSafe® Trademark has become well known, has a proven track record, and is respected across many industries.

We are more than happy to work with you to make absolutely certain that you are getting the right product for the right application. Speak to us today!

EXTINGUISHER BAGS

The UV treated plastic extinguisher bags are designed to protect fire extinguishers from harsh indoor production areas or dusty outdoor environments.

PRODUCT CODE	DESCRIPTION
FEBAG-4001	To suit 4.5kg extinguishers
FEBAG-9001	To suit 9kg extinguishers

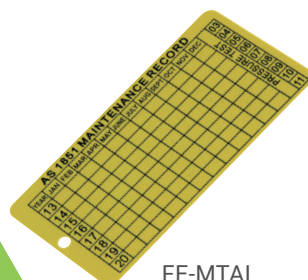


FEBAG-4001

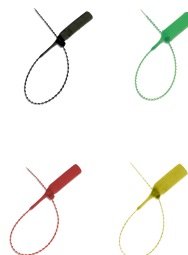


FEBAG-9001

MAINTENANCE TAG & SECURITY TIES



FE-MTAL



PRODUCT CODE	DESCRIPTION
FE-MTAL	Maintenance Tag
FE-STB	Security Tie - Black
FE-STG	Security Tie - Green
FE-STR	Security Tie - Red
FE-STY	Security Tie - Yellow

FIRE EQUIPMENT AND ACCESSORIES

EXTINGUISHER CABINETS

Galvanised Metal Cabinet

Fitted with 003 lock and a key in the break glass panel. High quality powder coated finish.

PRODUCT CODE	DESCRIPTION	DIMENSION
FE-MC45	Fits 4.5kg DCP extinguisher	590mm H, 280mm W, 210mm D
FE-MC90	Fits 9kg DCP extinguisher	760mm H, 280mm W, 230mm D



FE-MC45



FE-MC90



FE-PC90



FE-PC45

Plastic Cabinet

Our Heavy-Duty Cabinets come with latches for easy access.

PRODUCT CODE	DESCRIPTION	DIMENSION
FE-PC45	Fits 4.5kg DCP extinguisher	700mm H, 290mm W, 255mm D
FE-PC90	Fits 9kg DCP extinguisher	825mm H, 317mm W, 265mm D

VEHICLE BRACKETS

PRODUCT CODE	DESCRIPTION
FE-HDBR45	Heavy duty vehicle bracket to suit 4.5kg extinguisher
FE-HDBR90	Heavy duty vehicle bracket to suit 9kg extinguisher
FE-OCBR45	Over centre vehicle bracket to suit 4.5kg extinguisher
FE-OCBR90	Over centre vehicle bracket to suit 9kg extinguisher



FE-HDBR45



FE-HDBR90



FE-OCBR45



FE-OCBR90

FIRE BLANKETS

Fire blankets are effective in cases of minor fires. Complies to AS/NZS 3504.

MATERIAL: Woven fibreglass with plastic cover

PRODUCT CODE	SIZE
FB10	1000mm x 1000mm
FB12	1200mm x 1200mm
FB18	1800mm x 1200mm
FB1818	1800mm x 1800mm



FB10



FB12



FB18

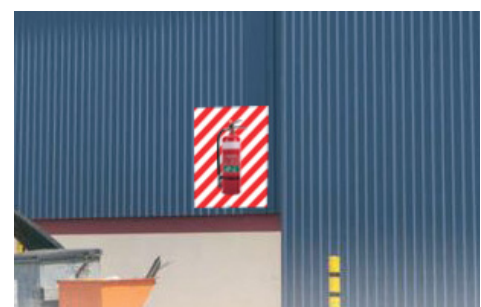


FB1818

FIRE EXTINGUISHER BACKING BOARDS

MATERIAL: Aluminium Class 1 reflective

PRODUCT CODE	DIMENSION
790C1	900mm x 600mm
791C1	1200mm x 900mm
792C1	1500mm x 1200mm



FIRE EXTINGUISHERS

Our Fire Extinguishers can be used to protect your office, shop, vehicle, industrial workplace or storage facility. View our Fire Extinguisher Selection Chart to ensure you buy the extinguisher most suited to your application.



FE-001

FE-0015

FE-002

FE-0025

FE-0045

FE-0090



FE-002CO2

FE-035CO2

FE-050CO2

FE-90AW

FE-WC20

FE-WC70

PRODUCT CODE	DESCRIPTION	AGENT CAPACITY	AGENT TYPE	TOTAL WEIGHT	FIRE RATING	DIMENSION
ABE POWDER EXTINGUISHER						
FE-001	1.0 Kg Fire Extinguisher – ABE Powder Type	1.0 kg	ABE Dry Chemical Powder	1.98 kg	1A:20B:E	85 x 351mm H
FE-0015	1.5 Kg Fire Extinguisher – ABE Powder Type	1.5 kg	ABE Dry Chemical Powder	3.2 kg	2A:30B:E	100 x 370mm H
FE-002	2.0 Kg Fire Extinguisher – ABE Powder Type	2.0 kg	ABE Dry Chemical Powder	3.8 kg	3A:30B:E	110 x 402mm H
FE-0025	2.5 Kg Fire Extinguisher – ABE Powder Type	2.5 kg	ABE Dry Chemical Powder	4.7 kg	3A:40B:E	131 x 435mm H
FE-0045	4.5 Kg Fire Extinguisher – ABE Powder Type	4.5 kg	ABE Dry Chemical Powder	7.8 kg	4A:60B:E	145 x 560mm H
FE-0090	9.0 Kg Fire Extinguisher – ABE Powder Type	9.0 kg	ABE Dry Chemical Powder	13.9 kg	6A:80B:E	183 x 615mm H
CO2 EXTINGUISHER						
FE-002CO2	2.0 Kg Fire Extinguisher – CO2 Type	2.0 kg	Carbon Dioxide	5.1 kg	2B:E	119 x 500mm H
FE-035CO2	3.5 Kg Fire Extinguisher – CO2 Type	3.5 kg	Carbon Dioxide	9.0 kg	5B:E	153 x 535mm H
FE-050CO2	5.0 Kg Fire Extinguisher – CO2 Type	5.0 kg	Carbon Dioxide	12.0 kg	10B:E	153 x 680mm H
AIR / WATER EXTINGUISHER						
FE-90AW	9.0 Litre Fire Extinguisher – Air/Water Type	9.0 L	Air & Water	12.1 kg	3A	175 x 630mm H
WET CHEMICAL EXTINGUISHER						
FE-WC20	2.0 Litre Fire Extinguisher – Wet Chemical Type	2.0 L	Wet Chemical	4.1 kg	1A:4F	102 x 445mm H
FE-WC70	7.0 Litre Fire Extinguisher – Wet Chemical Type	7.0 L	Wet Chemical	11.6 kg	3A:4F	181 x 630mm H

SDS HOLDERS

Safety Data Sheets (SDS) Wall Mount Stations, holders and signs are effective ways of ensuring critical information are protected, accessible and can easily be located whenever needed. We offer both indoor and outdoor solutions to efficiently organise safety and/or emergency information.

LOCKABLE EMERGENCY INFO CABINET

Robust Outdoor Storage Cabinet for mounting at entrance of property for emergency information.

PRODUCT CODE	DIMENSIONS
MB108	430 x 330 x 120 mm
MB106	500 x 500 x 160 mm



SDS WALL MOUNT BINDER STATIONS



SDH403



SDH405



SDH605

PRODUCT CODE	DESCRIPTION
SDH403	Single Indoor Station for SDS binder
SDH405	Single Outdoor Station for SDS binder
SDH605	Double Indoor Station for SDS binder

SDS BINDERS AND OUTDOOR HOLDER



SDSB



SDSY



SDH409

PRODUCT CODE	DESCRIPTION
SDSB	A4 Binder – Red/White
SDSY	A4 Binder – Black/Yellow
SDH409	Outdoor SDS holder A4; holds 1 x SDS Binder

SDS Binders are often used with the SDS Wall Mount Stations placed near doorways.

OUTDOOR SDS SHEET HOLDERS



SDH407



SDH408



SDH410



SDH411

PRODUCT CODE	DESCRIPTION	HOLDS
SDH407	Outdoor Flip Top SDS holder	A4 sheets
SDH408	Outdoor Front Opening SDS holder	A4 sheets
SDH410	Outdoor Front Opening SDS holder	A5 sheets
SDH411	Outdoor Tube SDS holder	A4 sheets

SDS SIGN

SDS Signs indicate where Safety Data Sheets, documents providing information on the properties of hazardous chemicals and their effect on health and safety, are located within the workplace.



Clearly indicating where SDS binders and sheets are kept for easy usage is an integral part of ensuring your workplace complies with Safe Work Australia Standards.

PRODUCT CODE	SIZE	DESCRIPTION
511LACM	600 x 450mm	Alucabond
511LP	600 x 450mm	Polypropylene
511LSACM	450 x 300mm	Alucabond
511LSP	450 x 300mm	Polypropylene
511MACM	300 x 225mm	Alucabond
511MP	300 x 225mm	Polypropylene
511OWP	225 x 225mm	Off Wall Poly
511DA	240 x 180mm	Self Adhesive

FIRST AID KITS



LLS3B



LLF3B



LLC3B



LLS4B



LLF4B



LLC4B



LLS5B



LLF5B



LLC5B

PRODUCT CODE	DESCRIPTION	DIMENSION
WORKPLACE RESPONSE KIT 3 – UP TO 15 PERSONS		
LLS3B	Softpack Kit 3 - c/w carry handle and belt strap	320mm x 160mm x 185mm H
LLF3B	Plastic Case Kit 3 - cantilevered trays and water resistant	320mm x 160mm x 185mm H
LLC3B	Metal Cabinet Kit 3 - lockable steel cabinet with shelving and door rack	260mm x 320mm x 120mm H
WORKPLACE RESPONSE KIT 4 – UP TO 50 PERSONS		
LLS4B	Softpack Kit 4 - c/w carry handle and belt strap	380mm x 200mm x 150mm H
LLF4B	Plastic Case Kit 4 - cantilevered trays and water resistant	390mm x 200mm x 230mm H
LLC4B	Metal Cabinet Kit 4 - lockable steel cabinet with shelving and door rack	330mm x 450mm x 170mm H
WORKPLACE RESPONSE KIT 5 – UP TO 100 PERSONS		
LLS5B	Softpack Kit 5 - c/w carry handle and belt strap	380mm x 200mm x 150mm H
LLF5B	Plastic Case Kit 5 - cantilevered trays and water resistant	390mm x 200mm x 230mm H
LLC5B	Metal Cabinet Kit 5 - lockable steel cabinet with shelving and door rack	330mm x 450mm x 170mm H

OTHER FIRST AID KITS



LLS2C



LLFFB



LLSOR



LLSTP



LLSSB



LLFBM



LLSTD



LLMND

PRODUCT CODE	DESCRIPTION	DIMENSIONS
LLS2C	Softpack Kit 2 - Ideal for small office or vehicle	210mm x 150mm x 75mm H
LLFFB	Basic First Aid Kit - Basic entry level kit in clear case	195mm x 155mm x 45mm H
LLSOR	Softpack Offroad Survival Kit – Best selling kit for the mining industry	330mm x 450mm x 170mm H
LLSTP	Softpack Truck & Plant Operator Kit – Specialist kit for heavy vehicle industry	180mm x 120mm x 70mm H
LLSSB	Snake & Spider Bite Kit - Softpack	160mm x 200mm x 40mm H
LLFBM	Burns Module - Plastic Case	195mm x 155mm x 45mm H
LLSTD	Trauma Deluxe Kit - Softpack	490mm x 300mm x 285mm H
LLMND	Marine First Aid Kit D	460mm x 255mm x 300mm H

FIRST AID BACKING BOARDS

MATERIAL: Aluminium Class 1 reflective

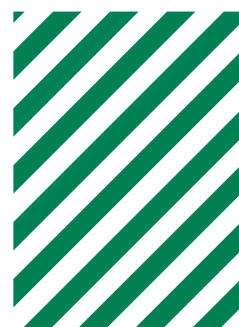
PRODUCT CODE	DIMENSION
0501C1	600mm x 450mm
0502C1	1200mm x 900mm
0503C1	1500mm x 1200mm



0501C1



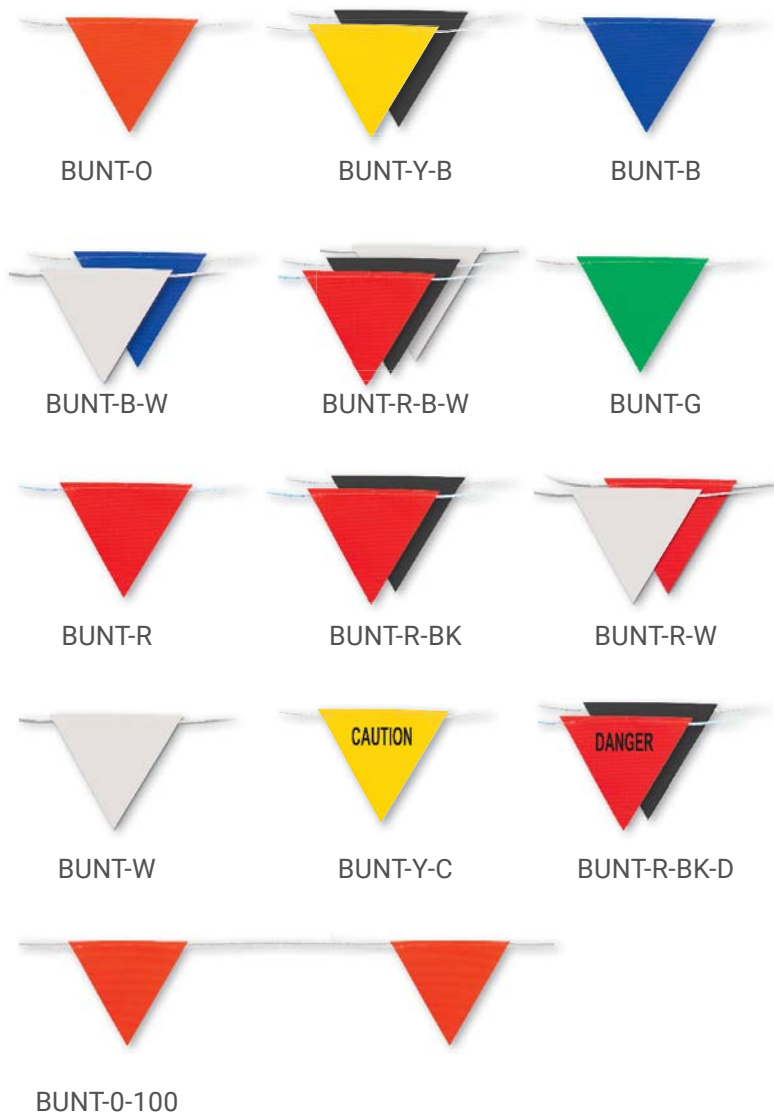
0502C1



0503C1

SITE SAFETY BARRIERS

FLAG BUNTING ROLLS



MAXSafe Flag Bunting is ideal for cordoning off areas for hazards. It can also be used for delineating zones on work sites, perfect for increasing site safety.

FEATURES

- Simple to install – easily attachable to posts or poles
- Approximately 45 flags per 30-metre length

PRODUCT CODE	COLOUR	LENGTH
BUNT-O	Orange	30m
BUNT-Y-B	Yellow/Black	30m
BUNT-B	Blue	30m
BUNT-B-W	White/Blue	30m
BUNT-R-B-W	Red/Black/White	30m
BUNT-G	Green	30m
BUNT-R	Red	30m
BUNT-R-BK	Red/Black	30m
BUNT-R-W	Red/White	30m
BUNT-W	White	30m
BUNT-Y-C	Yellow with CAUTION printed	30m
BUNT-R-BK-D	Red/Black with DANGER printed	30m
Bunt-O-100	Orange	100m

PLASTIC CHAIN – 8mm x 40m ROLLS

Plastic Chain is the ideal product for creating a temporary safety barrier. It is easy to notice and quick to install when used with the safety barrier clips. Just attach between two points and it's done.



FEATURES

- Lightweight
- Highly durable
- For both indoor and outdoor use
- Bright colours make the chain highly visible

PRODUCT CODE	COLOUR
PCI-Y	Yellow
PCI-YB	Yellow/Black
PCI-RW	Red/White

TRAFFIC CONES



Our Hi-vis Traffic Cones come in a variety of sizes and colour options, to ensure you have the right product for your site.

They are a safe and economical delineation and marking system, for traffic and pedestrian flow, and are lightweight and portable for easy set-up.

Made from highly durable materials and are suitable for both day and night use.

PRODUCT CODE	COLOUR	SIZE
RC450	Orange	450mm
RC450R	Orange Reflective	450mm
RC700	Orange	700mm
RC700R	Orange Reflective	700mm
RC700-YR	Yellow Reflective	700mm
RC700-GR	Green Reflective	700mm
RC700-BR	Blue Reflective	700mm

RETRACTABLE CONE BARS



PRODUCT CODE	DESCRIPTION	SPAN
RCB-BY	Black/Yellow Retractable Cone Bar	1.2m - 2.1m
RCB-RW	Red/White Retractable Cone Bar	1.2m - 2.1m

MAXSAFE® FLEXIBLE BOLLARD

- Made of Fluorescent Orange Virgin PU
- Embedded 3M 3340HIP Tape
- 2 Cat-Eye in the Base

PRODUCT CODE	DESCRIPTION	SIZE
MAX-FB001	MAXSafe Flexible Bollard	750mm



RETRACTABLE BARRIER TAPE



PRODUCT CODE	COLOUR	SPAN
RBT-YB	Black/Yellow	0 - 3 m
RBT-RW	Red/White	0 - 3 m
RBT-YB-9	Black/Yellow	0 - 9 m
RBT-RW-9	Red/White	0 - 9 m

T-TOP BOLLARDS



PRODUCT CODE	DESCRIPTION
PB6K	1150mm Bollard with 6kg rubber base
PB8K	1150mm Bollard with 8kg rubber base

REFLECTIVE SLEEVES

Various reflective sleeves available

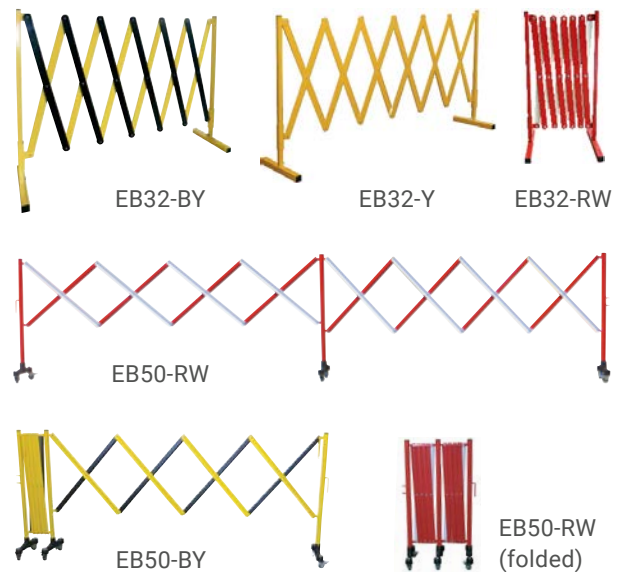


SITE SAFETY BARRIERS

PORTABLE EXPANDING BARRIERS

- Ideal for pedestrian control
- Strong but lightweight for easy carrying and storage
- Folds up to small footprint when not in use
- Adjust the length according to your requirement

PRODUCT CODE	COLOUR	SIZE
EB32-Y	Yellow	950 mm x 3.2 metre
EB32-BY	Yellow/Black	950 mm x 3.2 metre
EB32-RW	Red/White	950 mm x 3.2 metre
EB50-BY	Yellow/Black	1050 mm x 5.0 metre
EB50-RW	Red/White	1050 mm x 5.0 metre



BARRIER WITH TRIANGULAR METAL LEGS

Our Barrier with Triangular Metal Legs is a quick and effective way of prohibiting entry and identifying hazards.

- 2.5m Long board made from durable plastic
- Board has reflective stripes for day/night visibility
- Simple disassembly and stores flat



PRODUCT CODE	COLOUR	LENGTH
SBBL	Yellow / Black	2500 mm

WALL MOUNTED RETRACTABLE BARRIER TAPE

MAXSafe® 5 and 10 metre Wall Mounted Retractable Barrier Tapes are especially useful in places with limited space. These barrier tapes help restrict areas while keeping the floors free of stanchion posts. Perfect for warehouses or other facilities that need to direct pedestrian traffic for a safer working environment.

- ✓ Simple and easy to mount
- ✓ Durable
- ✓ Highly visible



Comes with receiving clip

PRODUCT CODE	COLOUR	LENGTH
RBTWM-RW-5	Red / White	5 metres
RBTWM-YB-5	Yellow / Black	5 metres
RBTWM-RW-10	Red / White	10 metres
RBTWM-YB-10	Yellow / Black	10 metres

MAXSafe®
Wall Mounted
Retractable Barrier
Tape (Red/White)
with receiving clip



MAXSafe®
Wall Mounted
Retractable Barrier
Tape (Yellow/Black)
with receiving clip



BARRIER TAPES

Barrier Tapes are designed for creating temporary barricades to dangerous or restricted areas. Our Barrier tapes are easy to use, they can be tied, stapled, nailed, and wrapped around poles or metal barricades and have the ability to be reused multiple times.

DIMENSIONS: 75 mm x 300 metres



BTYC



BTRWD



BTYB



BTRBW1



BTGW



BTRW

PRODUCT CODE	DESCRIPTION
BTYC	Yellow – Caution
BTRWD	Red/White – Danger
BTYB	Black/Yellow
BTRBW1	Blue/White
BTGW	Green/White
BTRW	Red/White

FLAGGING TAPES

Highly visible even from distances, Flagging Tape can be used for marking, surveying, or cordoning off hazardous areas. Our Flagging Tape comes in multiple colours and is suitable for both indoor and outdoor use. Being non-adhesive, it leaves no mark when removed.

DIMENSIONS: 25 mm x 75 metres



PRODUCT CODE	COLOUR
FLT1B	Blue
FLT1G	Green
FLT1P	Pink
FLT1W	White
FLT1FG	Fluoro Green
FLT1O	Orange
FLT1R	Red
FLT1Y	Yellow

REFLECTIVE TAPES

Reflective tape is visible in all conditions, and good for areas of low lighting.

PRODUCT CODE	DESCRIPTION	SIZE
RT1RW	Red/White, Class 2	50mm x 5m
RT2RW	Red/White, Class 2	50mm x 10m
RT3RW	Red/White, Class 2	50mm x 45.7m
RT4RW	Red/White, Class 2	75mm x 5m
RT6RW	Red/White, Class 2	75mm x 45.7m
RT9RW	Red/White, Class 2	100mm x 45.7m
RT1YB	Yellow/Black, Class 2	50mm x 5m
RT2YB	Yellow/Black, Class 2	50mm x 10m
RT3YB	Yellow/Black, Class 2	50mm x 45.7m
RT6YB	Yellow/Black, Class 2	75mm x 45.7m
RT9YB	Yellow/Black, Class 2	100mm x 45.7m
RT2RY	Red/Yellow, Class 2	50mm x 10m
RT3RY	Red/Yellow, Class 2	50mm x 45.7m
RT9RY	Red/Yellow, Class 2	100mm x 45.7m

PRODUCT CODE	DESCRIPTION	SIZE
CT1Y	Yellow, Class 1	50mm x 5m
CT5Y	Yellow, Class 1	50mm x 45.7m
RT2Y	Yellow, Class 2	50mm x 10m
RT3Y	Yellow, Class 2	50mm x 45.7m
CT1R	Red, Class 1	50mm x 5m
CT5R	Red, Class 1	50mm x 45.7m
RT1R	Red, Class 2	50mm x 5m
RT2R	Red, Class 2	50mm x 10m
RT3R	Red, Class 2	50mm x 45.7m
CT1W	White, Class 1	50mm x 5m
CT5W	White, Class 1	50mm x 45.7m
RT1W	White, Class 2	50mm x 5m
RT2W	White, Class 2	50mm x 10m
RT3W	White, Class 2	50mm x 45.7m
CT5LG	Lime Green, Class 1	50mm x 45.7m
CT6LG	Lime Green, Class 1	75mm x 45.7m
CT9LG	Lime Green, Class 1	100mm x 45.7m



Red/White



Yellow/Black



Red/Yellow



Yellow



Red



White



Lime Green

SITE SAFETY

UNDERGROUND TAPES

Our Underground Tapes create a warning for digging crews and excavators of buried services below ground. Manufactured in accordance with Australian standards, our underground tapes are resistant to high pH soils, discolouration, and rot. Highly visible and with the ability to stretch,

these underground tapes have been designed to withstand long periods underground. We supply Non-Detectable tapes and Detectable tapes that contain a stainless steel wire running the length of the roll to make locating it easy when using a metal detector.



UGT-DTCC / UGT-NDCC



UGT-DTEC / UGT-NDEC



UGT-DTGM / UGT-NDGM



UGT-DTWM / UGT-NDWM



UGT-DTFM / UGT-NDFM



UGT-DTIM / UGT-NDIM



UGT-DTSW / UGT-NDSW



UGT-DTSB / UGT-NDSB



UGT-DTRR / UGT-NDRR



UGT-NDRS



UGT-DTFO



PRODUCT CODE	DESCRIPTION	COLOUR	CLASS	SIZE
UGT-DTCC	WARNING - Communication Cable Below	White with Black Text	Detectable	150 mm x 500 m
UGT-NDCC	WARNING - Communication Cable Below	White with Black Text	Non-Detectable	150 mm x 500 m
UGT-DTEC	DANGER - Electrical Cable Below	Orange with Black Text	Detectable	150 mm x 500 m
UGT-NDEC	DANGER - Electrical Cable Below	Orange with Black Text	Non-Detectable	150 mm x 500 m
UGT-DTGM	DANGER - Gas Main Below	Yellow with Black Text	Detectable	100 mm x 250 m
UGT-NDGM	DANGER - Gas Main Below	Yellow with Black Text	Non-Detectable	150 mm x 500 m
UGT-DTWM	WARNING - Water Main Below	Green with Black Text	Detectable	100 mm x 250 m
UGT-NDWM	WARNING - Water Main Below	Green with Black Text	Non-Detectable	150 mm x 500 m
UGT-DTFM	WARNING - Fire Main Below	Red with Black Text	Detectable	100 mm x 250 m
UGT-NDFM	WARNING - Fire Main Below	Red with Black Text	Non-Detectable	150 mm x 500 m
UGT-DTIM	WARNING - Irrigation Main Below	Blue with Black Text	Detectable	100 mm x 250 m
UGT-NDIM	WARNING - Irrigation Main Below	Blue with Black Text	Non-Detectable	150 mm x 500 m
UGT-DTSW	WARNING - Storm Water Main Below	Blue with Black Text	Detectable	100 mm x 250 m
UGT-NDSW	WARNING - Storm Water Main Below	Blue with Black Text	Non-Detectable	150 mm x 500 m
UGT-DTSB	WARNING - Sewer Below	Beige with Black Text	Detectable	100 mm x 250 m
UGT-NDSB	WARNING - Sewer Below	Beige with Black Text	Non-Detectable	150 mm x 500 m
UGT-DTRR	WARNING - Recycled/Reclaimed Water Main Below	Lilac with Black Text	Detectable	100 mm x 250 m
UGT-NDRR	WARNING - Recycled/Reclaimed Water Main Below	Lilac with Black Text	Non-Detectable	150 mm x 500 m
UGT-NDRS	DANGER - Railway Signalling Cable	Orange with Black Text	Non-Detectable	150 mm x 500 m
UGT-DTFO	WARNING - Fibre Optic Cable Below	White with Black Text	Detectable	100 mm x 250 m

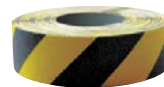
ANTI-SLIP TAPES



Yellow



Black



Yellow/Black

PRODUCT CODE	SIZE
AST1Y	25mm x 18m
AST2Y	50mm x 18m
AST4Y	100mm x 18m
AST6Y	150mm x 18m

PRODUCT CODE	SIZE
AST1B	25mm x 18m
AST2B	50mm x 18m
AST4B	100mm x 18m

PRODUCT CODE	SIZE
AST1BY	25mm x 18m
AST2YB	50mm x 18m
AST4BY	100mm x 18m
AST6YB	150mm x 18m

SOLAR LED BEACON

- Solar panel & light sensitive switch
- Fully sealed from water & dust
- 500 m - 1 km visibility

DIMENSION: 200mm H



PRODUCT CODE	COLOUR	SIZE
SWB-BLU	Blue	200mm
SWB-GRN	Green	200mm
SWB-RED	Red	200mm
SWB-WHT	White	200mm
SWB-YLW	Yellow	200mm

BUTT BIN

Butt out safely with the MAXSafe® Butt Bin!

- Design restricts oxygen to quickly extinguish butts.
- Rain protective design keeps water out and eliminates odour.

- Top of container hinges for easy access to empty internal bin
- UV Stable Polypropylene
- C/W Galvanised Bucket

PRODUCT CODE: MAX-BB01

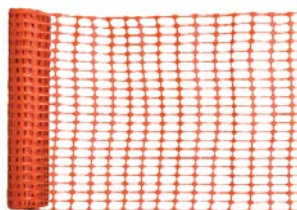


SITE PRODUCTS

AMSPC



RF360



BM01



USBT

MAH09



Air Horn

DAH09



PRODUCT CODE	DESCRIPTION
MAH09	Disposable Air Horn
DAH09	Rechargeable with pump



RSPL600



RSPL400

Safety Step

PRODUCT CODE	DESCRIPTION
RSPL600	Rectangular 2 Step - Yellow
RSPL400	Orange, 150kg SWL

PRODUCT CODE	DESCRIPTION
AMSPC	Starpicket Caps, UV Resistant - Bag of 100
RF360	Barricade Lamp - Amber, Replacement batteries are available
BM01	Barrier Mesh, Orange, 1m x 50m, Made from UV stabilised HDPE for durability, Re-useable
USBT	Breakdown Triangle - Set of 3, Compact Storage Case included

SCAFFOLD INSPECTION TAG



SCAFFOLD TAG KIT

- 20 x MAXSafe® Scaffold Tags - Standard
- 10 x MAXSafe® Scaffold Tags - Extended/Duplicate
- 1 x PK/100 Cable Ties
- 1 x Permanent Marker Pen

PRODUCT CODE: MAX-STKIT

SCAFFOLD INSPECTION TAG COMPONENTS



MAXSafe® Scaffold Tag – Standard

PRODUCT CODE	PACK QTY
MAX-ST011	20
MAX-ST012	100
MAX-ST013	500



MAXSafe® Scaffold Tag – Extended/ Duplicate

PRODUCT CODE	PACK QTY
MAX-STEX1	50
MAX-STEX2	500
MAX-STEX3	1000



MARKER PEN

PRODUCT CODE: MAX-STPM

DESCRIPTION: 1 pc Permanent Marker Pen



CABLE TIES

PRODUCT CODE: MAX-STCT

DESCRIPTION: Cable Ties - PK/100

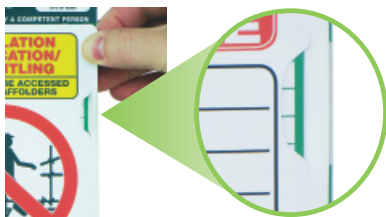
The MAXSafe® Scaffold Tag eliminates the limitations of the traditional scaffold tag, by not having to be hung on the scaffold tube. This means that the MAXSafe® Scaffold Tag does not need to be cut or modified to fix in the best place in every situation.

MAXSafe® Scaffold Inspection Tags don't need to be removed or altered throughout the scaffolding process and also has the outstanding feature of being able to extend the certification stage by simply adding an insert tag. Up to 10 inserts can be added per tag.

MAXSafe® Scaffold Tags are the best single package solution in almost every situation for ensuring safety for all users of the scaffold. Designed for use on all work sites, always providing the highest level of safety and compliance.

FEATURES

- ✓ Ultra tough poly construction, virtually untearable
- ✓ Scaffolder friendly
- ✓ Meets and exceeds AS standards
- ✓ Extremely versatile – not limited to where, or how to hang it
- ✓ Cost effective and re-usable
- ✓ Total message on one page
- ✓ Clear to all persons who access scaffold – not just scaffolders
- ✓ High wind resistance
- ✓ Impervious to dust, dirt and grime



Quick Release Tabs

With our unique 'Quick Release Tab' system, the tag can be easily swapped between phases, and is very effective at holding in place.

Industry Problem Rectified: Means no insert tag is left flapping.



Dedicated Lockout Point

The only Scaffold Inspection Tag in the industry to come with a dedicated, built-in Lockout Point on the 'Do Not Use' stage. Lockout Padlocks or Cable Ties can be used to secure on the 'Do Not Use' stage.

Industry Problem Rectified: Means no one else can swap the tag to Certification when scaffold is not ready.



Check Special Notes 'Tick Box'

With a clearly identifiable box for marking if there are Special Notes, the need for checking before accessing is made clear for all trades.

Industry Problem Rectified: No need to spend time checking all sides of tag for Special Notes if box is not ticked.



Dedicated 'Special Notes' Section

A dedicated 'Special Notes' section is located on reverse side of certification stage of tag. A simple and efficient way to allow all users to check instantly.

Industry Problem Rectified: Plenty of room to write specific and detailed Special Notes.



Certification Extended Section

A dedicated section in centre of tag for Extra Certification tags, has 4 holding tabs to ensure they cannot blow out. Users of the scaffold are notified of this by a tick box on the front tab.

Industry Problem Rectified: Extend tag life on job site indefinitely by using inexpensive Extra Certification tag.



Handover Certificate 'Tick Box'

It can be clearly marked on Certification Tab if handover certificate is in use or not.

Industry Problem Rectified: Eliminates confusion as to whether a handover certificate has been used or not.



Universal Cable Tie Holes

The tag has dedicated cable tie points at top and bottom for quick mounting on scaffold tube. It enables the user to position tag exactly where needed.

Industry Problem Rectified: Does not have to be hung on a horizontal tube like the traditional tags do.

SAFETY STATIONS



MAX-STR-GF



MAX-STR-SC



MAX-STR-FR

SAFETY STATIONS

The full scope of an accident isn't always clear straight away. Having a complete kit in a mobile Safety Station allows you to react quickly and address a wide range of potential incidents. The Trolleys are made from powder coated steel with solid heavy duty wheels. The Cabinets feature hinged doors and lockable latches.

The contents of our Safety Stations have been specifically selected to ensure you have everything you need in order to respond to emergencies quickly and efficiently. The contents can be easily reordered using the reorder codes on the front and back of each Station.

Replacement Trolleys and Cabinets are available. We can also create customised stations to meet specific requirements. Talk to us today to find out more!

DIMENSIONS

TROLLEY: 1500mm H x 650mm W

CABINET: 735mm H x 616mm W x 270mm D

PRODUCT CODE	DESCRIPTION
MAX-STR-GF	First Aid Station
MAX-STR-SC	Site Safety Station
MAX-STR-FR	Fire Extinguisher Station

First Aid Station

- 1 x Snake & Spider Bite Kit (LLSSB)
- 1 x Dual Personal Eyewash: 1 x 500ml pH & 1 x 1000ml Saline (AM-H7541)
- 1 x Haemorrhage First Aid Kit (AMFAWT3UMHM)
- 1 x Minor Wound First Aid Kit (AM-FAWT3UMMWM)
- 1 x Burns First Aid Kit (AM-FAWT3UMBM)
- 1 x Extra Stock First Aid Kit (AM-FAWT3UMAM)

Site Safety Station

- 1 x 15 Person Workplace Response First Aid Kit (LLF3B)
- 1 x 'Caution' Barrier tape, 75mm x 300m Roll (BTYC)
- 1 x 40 Litre General Purpose Spill Kit (MAX-40GP)
- 1 x Disposable Air Horn (MAH09)
- 1 x A5 SDS Holder (SDH410)
- 1 x 1000ml Saline Eyewash (AM-H7584)

Fire Extinguisher Station

- 1 x 9kg ABE Powder Fire Extinguisher (FE-0090)
- 1 x 2kg CO2 Fire Extinguisher (FE-002C02)



VINYL HOLDER

PERMIT AND DOCUMENT HOLDERS

Improve safety and security by making documents available onsite. Our Vinyl Holders will allow you to store copies of your certificates where they are needed. Made from vinyl with a clear front, it protects documents from the elements while allowing easy inspection and retrieval. Any worker can quickly validate if an equipment or production area is safe for operation. Our Vinyl Holders come in velcro closure or zip on 1 side.



A4 Portrait Vinyl Holder - Velcro Closure



A3 Landscape Vinyl Holder - Velcro Closure



Danger Do Not Operate Vinyl Tag



A5 Portrait Vinyl Holder - Zip on 1 Side



Personal Danger Tag



A4 Permit Holder Made with Rip Stop Material

PRODUCT CODE	DESCRIPTION	COLOUR	PACK QTY	DIMENSION
MAX-PDHA4P-R-10	A4 Portrait Vinyl Holder - Velcro - Reflective Strip - Water & UV Resistant	Red Back	10	440 x 320 mm
MAX-PDHA4P-Y-10	A4 Portrait Vinyl Holder - Velcro - Reflective Strip - Water & UV Resistant	Yellow Back	10	440 x 320 mm
MAX-PDHA4P-B-10	A4 Portrait Vinyl Holder - Velcro - Reflective Strip - Water & UV Resistant	Blue Back	10	440 x 320 mm
MAX-PDHA3P-R-10	A3 Portrait Vinyl Holder - Velcro - Reflective Strip - Water & UV Resistant	Red Back	10	560 x 390 mm
MAX-PDHA3P-Y-10	A3 Portrait Vinyl Holder - Velcro - Reflective Strip - Water & UV Resistant	Yellow Back	10	560 x 390 mm
MAX-PDHA3P-B-10	A3 Portrait Vinyl Holder - Velcro - Reflective Strip - Water & UV Resistant	Blue Back	10	560 x 390 mm
MAX-PDHA3L-R-10	A3 Landscape Vinyl Holder - Velcro - Reflective Strip - Water & UV Resistant	Red Back	10	455 x 495 mm
MAX-PDHA3L-Y-10	A3 Landscape Vinyl Holder - Velcro - Reflective Strip - Water & UV Resistant	Yellow Back	10	455 x 495 mm
MAX-PDHA3L-B-10	A3 Landscape Vinyl Holder - Velcro - Reflective Strip - Water & UV Resistant	Blue Back	10	455 x 495 mm
MAX-DNOENV-R-100	Danger Do Not Operate Vinyl Tag - Clear Pocket for Personal ID	Red	100	235 x 110 mm
MAX-DNOENV-Y-100	Danger Do Not Operate Vinyl Tag - Clear Pocket for Personal ID	Yellow	100	235 x 110 mm
MAX-DNOENV-B-100	Danger Do Not Operate Vinyl Tag - Clear Pocket for Personal ID	Blue	100	235 x 110 mm
MAX-CPHA5P-R-25	A5 Portrait Vinyl Holder - Zip on 1 side - Eyelet at Top	Red Top	25	340 x 185 mm
MAX-CPHA5P-Y-25	A5 Portrait Vinyl Holder - Zip on 1 side - Eyelet at Top	Yellow Top	25	340 x 185 mm
MAX-CPHA5P-B-25	A5 Portrait Vinyl Holder - Zip on 1 side - Eyelet at Top	Blue Top	25	340 x 185 mm
MAX-CPHA5P-O-25	A5 Portrait Vinyl Holder - Zip on 1 side - Eyelet at Top	Orange Top	25	340 x 185 mm
MAX-CPHA4P-R-25	A4 Portrait Vinyl Holder - Zip on 1 side - Eyelet at Top	Red Top	25	460 x 275 mm
MAC-CPHA4P-Y-25	A4 Portrait Vinyl Holder - Zip on 1 side - Eyelet at Top	Yellow Top	25	460 x 275 mm
MAX-CPHA4P-B-25	A4 Portrait Vinyl Holder - Zip on 1 side - Eyelet at Top	Blue Top	25	460 x 275 mm
MAX-CPHA4P-O-25	A4 Portrait Vinyl Holder - Zip on 1 side - Eyelet at Top	Orange Top	25	460 x 275 mm
MAX-CPHA3P-R-25	A3 Portrait Vinyl Holder - Zip on 1 side - Eyelet at Top	Red Top	25	700 x 345 mm
MAX-CPHA3P-Y-25	A3 Portrait Vinyl Holder - Zip on 1 side - Eyelet at Top	Yellow Top	25	700 x 345 mm
MAX-CPHA3P-B-25	A3 Portrait Vinyl Holder - Zip on 1 side - Eyelet at Top	Blue Top	25	700 x 345 mm
MAX-CPHA3P-O-25	A3 Portrait Vinyl Holder - Zip on 1 side - Eyelet at Top	Orange Top	25	700 x 345 mm
MAX-PDTENV-W-100	Personal Danger Tag - Poly with Clear Vinyl Pocket - Printed both Sides	Red/Black	100	160 x 85 mm
MAX-PMH	A4 Permit Holder Made with Rip Stop Material - Velcro - UV 0.40 Clear Front	Yellow Back	1	

ELECTRICAL AND ASBESTOS SAFETY

RUBBER CABLE COVER

- ✓ Non Conductive & Economical Cable Protector
- ✓ Suitable for pedestrian and light vehicle traffic
- ✓ 3 good size channels for a variety of cord sizes
- ✓ Hinged Lid for ease of use
- ✓ Safety Yellow Lid with Anti-Slip Surface
- ✓ Suitable for indoor & outdoor use
- ✓ Male/Female interconnect system means you can form your needed length quickly and easily
- ✓ 3x Channels at 60mm W x 50mm H

PRODUCT CODE	DESCRIPTION
SRCC3	Channels suit up to 3 cables
SRCCEC	End caps to suit - pair



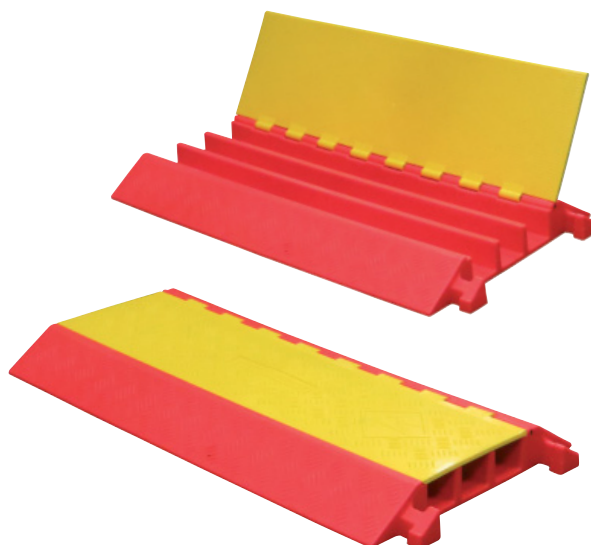
HEAVY DUTY, LOAD RATED PU CABLE COVER - 3 CHANNEL

Our Heavy Duty Cable Cover - 3 Channel is made from polyurethane for extended durability, ensuring protection of electrical cables against harsh work environment. It features a hinged lid for easy placement and removal of cables.

- ✓ Male/female connections for any length you require
- ✓ UV stable for outdoor use
- ✓ Hi-viz orange and yellow
- ✓ Anti-slip surface on top and sides
- ✓ Rated to 4.5 T per tyre
- ✓ Suit up to 3 Cables
- ✓ 3 x Channels each 58mm H x 65mm W

HEAVY DUTY, LOAD RATED PU CABLE COVER - 3 CHANNEL

WEIGHT	13 kg
DIMENSIONS	900mm L x 550mm W x 75mm H
PRODUCT CODE:	MAX-HDCC3



DROPOVER RUBBER CABLE COVER

To use Dropover Rubber Cable Cover, simply dropover on top of cables. The Male/female connections makes it easy to form any length required. Best suited for pedestrian applications.

- ✓ Hi-vis Yellow Cable Protector
- ✓ Made from rubber for flexibility
- ✓ UV stable for outdoor use
- ✓ Anti-slip surface on top and sides
- ✓ Channel Size 40mm W x 10mm H



DROPOVER RUBBER CABLE COVER

WEIGHT	1.5 kg
DIMENSIONS	1000mm L x 130mm W x 20mm H
PRODUCT CODE:	MAX-YDOC

LEAD STANDS & LEAD HOOKS

Electrical cables on the ground can be a source of danger to on-site workers. That is why we offer a variety of Lead Stands & Lead Hooks to assist with the elevation of all types of power leads.

Our Lead Stands and Lead Hooks are non-conductive, non-corrosive and highly visible. All are proven to withstand the harsh Australian conditions.

MAXSafe™ Poly Base Lead Stand

Complete with 1.2m - 2.4m high non conductive fibreglass pole and plastic lead holder.

MAXSafe™ Metal Base Lead Stand

Complete with 1.2m - 2.4m high metal pole and plastic lead holder.

Lead Hook - Standard

Standard electrical lead hook, non-conductive and non-corrosive.

Lead Hook – Heavy Duty

Heavy duty lead hook SWL tested to 50kg. Non-conductive and non-corrosive.

Lead Stand Replacement Hooks



AMLT-P



AMLT-M



PRODUCT CODE	DESCRIPTION
LEAD STANDS	
MAX-LSPB	MAXSafe™ Poly Base Lead Stand
MAX-LSMB	MAXSafe™ Metal Base Lead Stand
LEAD HOOKS	
MAX-LHSTD	Lead Hook - Standard
MAX-LHHD	Lead Hook – Heavy Duty
AMLT-P	Replacement Hooks To Suit Poly Base Lead Stand
AMLT-M	Replacement Hooks To Suit Metal Base Lead Stand

ASBESTOS SAFETY PRODUCTS

Asbestos is a deadly carcinogen. Removed asbestos must be properly labeled and the site taped off to non-workers.

PRODUCT CODE	DESCRIPTION	SIZE
ASBESTOS BAGS		
AB69	Heavy duty poly bags, printed for safe disposal of asbestos	900mm x 600mm
AB71	Heavy duty poly bags, printed for safe disposal of asbestos	1100mm x 700mm
BARRIER TAPE		
BT1Y2A	Yellow — Danger Asbestos Removal	75mm x 300m x 1mm
ADHESIVE TAPE		
BT1Y3	Yellow — Caution Asbestos	48mm x 66m



AB69



AB71



BT1Y2A



BT1Y3

MAXSAFE™ ANTI-SLIP



MAXSafe™ Anti-slip is a premium range of anti-slip products that are designed and manufactured in Australia, for tough Australian conditions.

Reduce and eliminate slip risks in your workplace with our quality anti-slip products for stairs, ladders, conveyor channels and other potential hazards.

Highly effective in both wet and dry conditions, these Anti-slip products have been developed and tested to meet or exceed the most demanding requirements in industrial and commercial environments.

MAXSAFE™ ANTI-SLIP STAIR NOSING

Anti-Slip Stairnosing can easily be fitted over existing surfaces to overcome wet or oily steps.

- Suitable for all stair surfaces - metal, concrete, wood, masonry etc.
- Chemical, UV and impact resistant.
- Bright safety yellow - makes all stairs highly visible.
- AS/NZS Certified.

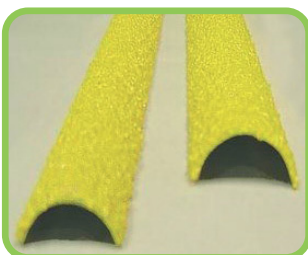


PRODUCT CODE	DIMENSIONS	HOLES FOR FIXING
MAX-SN01	50mm x 20mm x 580mm	2
MAX-SN02	50mm x 20mm x 730mm	3
MAX-SN03	50mm x 20mm x 880 mm	3
MAX-SN04	50mm x 20mm x 1030mm	3
MAX-SN05	50mm x 20mm x 1180mm	3
MAX-SN06	80mm x 20mm x 450mm	2
MAX-SN07	80mm x 20mm x 600mm	2
MAX-SN08	80mm x 20mm x 750mm	3
MAX-SN09	80mm x 20mm x 900mm	3
MAX-SN10	80mm x 20mm x 1200mm	3
MAX-SN11	100mm x 20mm x 450mm	2
MAX-SN12	100mm x 20mm x 600mm	2
MAX-SN13	100mm x 20mm x 750mm	3
MAX-SN14	100mm x 20mm x 900mm	3
MAX-SN15	100mm x 20mm x 1200mm	3

MAXSAFE™ ANTI-SLIP LADDER RUNGS

FEATURES

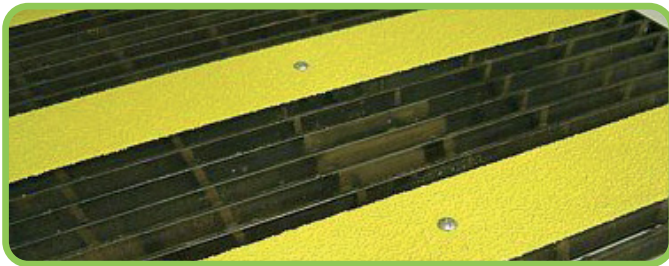
- Bright Safety Yellow - Makes all rungs highly visible
- Makes rungs safer with broader surface
- Easy to install
- AS/NSZ Certified



PRODUCT CODE	SIZE
MAX-LR101	20mm Dia - 300mm long
MAX-LR102	20mm Dia - 350mm long
MAX-LR103	20mm Dia - 400mm long
MAX-LR104	20mm Dia - 450mm long
MAX-LR105	20mm Dia - 500mm long
MAX-LR201	25mm Dia - 300mm long
MAX-LR202	25mm Dia - 350mm long
MAX-LR203	25mm Dia - 400mm long
MAX-LR204	25mm Dia - 450mm long
MAX-LR205	25mm Dia - 500mm long

MAXSAFE™ ANTI-SLIP METAL PLATES

- Excellent alternative to full decking
- Install in minutes
- Chemical, UV, and impact resistant
- AS/NZS certified



PRODUCT CODE	DIMENSIONS	HOLES FOR FIXING
MAX-MS01	50mm x 580mm	2
MAX-MS02	50mm x 730mm	3
MAX-MS03	50mm x 880mm	3
MAX-MS04	50mm x 1030mm	3
MAX-MS05	50mm x 1180mm	3
MAX-MS06	100mm x 580mm	2
MAX-MS07	100mm x 730mm	3
MAX-MS08	100mm x 880mm	3
MAX-MS09	100mm x 1030mm	3
MAX-MS10	100mm x 1180mm	3

MAXSAFE™ ANTI-SLIP CONVEYOR CHANNEL

The MAXSafe™ Anti-slip Conveyor Channel is specifically designed to make conveyor walkways with steep incline safer for pedestrian traffic. The bright yellow colour makes the whole walkway highly visible. It comes in standard of 50mm depth with varying widths to suit your application.

FEATURES

- Chemical, UV and impact resistant
- AS/NZS certified

PRODUCT CODE	SIZE
MAX-CC01	50mm x 580mm
MAX-CC02	50mm x 730mm
MAX-CC03	50mm x 880mm
MAX-CC04	50mm x 1030mm



All MAXSafe™ Anti-slip products are covered by a full 5 year warranty.

MAXSAFE™ FIXINGS

PRODUCT CODE	DESCRIPTION
MAX-MS	Masonry Screws
MAX-CSC	Fastener Clip Set
MAX-SC1	Saddle Clip, Bolt & Lock Nut
MAX-SC2	S/S Saddle Clip, Bolt & Lock Nut
MAX-TS	12 - 24 Tek Screw CL3 Hex SDS
MAX-SF	Sika Flex 252 310mm



MAX-MS



MAX-CSC



MAX-SC1 / MAX-SC2



MAX-TS



MAX-SF

STANDING AND KNEELING MATS

MAXSAFE EXTREME® STANDING MATS

- Keeps the worker's body in gentle motion to improve circulation and joint lubrication
- Eliminates high frequency vibrations
- Designed for multiple applications in many different industries
- Yellow safety stripes on all edges



PRODUCT CODE	DESCRIPTION	DIMENSION
MAX-ESM01	Standing Mat - S	350 x 540 x 25 mm
MAX-ESM02	Standing Mat - M	400 x 710 x 25 mm
MAX-ESM03	Standing Mat - L	450 x 910 x 25 mm
MAX-ESM04	Standing Mat - XL	600 x 910 x 25 mm
MAX-ESM05	Standing Mat - Big	910 x 1520 x 25 mm
MAX-ESM06	Standing Mat - Giant	910 x 2130 x 25 mm



MAX-ESM06

MAXSAFE ERGOKNEEL® KNEELING MATS

- Reduces knee trauma and low back stress
- Pain free kneeling increases productivity
- Impervious to petroleum products
- Easy to handle and store with built in carry handle



MAX-EK01



MAX-EK02



MAX-EK03

PRODUCT CODE	DESCRIPTION	DIMENSION
MAX-EK01	MAXSafe Ergokneel Pocket Kneeler - Pk6	100 x 150 x 25 mm
MAX-EK02	MAXSafe Ergokneel Handy Mat 1	200 x 400 x 25 mm
MAX-EK03	MAXSafe Ergokneel Handy Mat 2	355 x 535 x 25 mm

ANTI-FATIGUE MAT

Anti-Fatigue Mats help reduce the stress associated with prolonged standing on hard surfaces and can be used both indoors and outdoors.

- Ideal for engine rooms, ute mats, horse floats, workstations etc.
- Large holes provide quick drainage
- Low profile allows hand trolleys to pass over easily
- Will resist lubricants, welding and hot machine sparks



ANTI FATIGUE RUBBER KING

DIMENSION: 900mm x 1500mm x 14mm

PRODUCT CODE: IR90150

SITE VEHICLE SAFETY

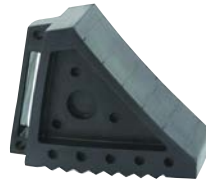
WHEEL CHOCKS



SWC101.5



SWC102



SEWC02



SEWC01

PRODUCT CODE	DESCRIPTION	FOR TYRE SIZE:	DIMENSION	WEIGHT TESTED*	WEIGHT
SWC101.5	Premium Wheel Chock – Size 1.5	400mm - 800mm Dia	180 x 115 x 100mm H	3,200kg	1.0 kg
SWC102	Premium Wheel Chock – Size 2	400mm - 800mm Dia	210 x 200 x 150mm H	18,500kg	1.6 kg
SEWC01	Rubber Wheel Chock – Size 1		270 x 180 x 120mm H		
SEWC02	Rubber Wheel Chock – Size 2		200 x 150 x 100mm H		

*Tested using 2 chocks at gradient of 10%

WHEEL CHOCK BRACKET



SWC-USB1.5



SWC-USB1.5D



SWC-USB2

MAXChock Wheel Chock Brackets are essential for on-vehicle storage of our lightweight Wheel Chocks. They enable the vehicle operator to quickly and efficiently chock the vehicle when stopped anywhere on site. All of our Wheel Chock Brackets are made in Australia.



PRODUCT CODE	DESCRIPTION
SWC-USB1.5	Single mount U shaped Bracket – to suit size 1.5 Premium Wheel Chock
SWC-USB1.5D	Double mount U shaped Bracket – to suit size 1.5 Premium Wheel Chock
SWC-USB2	Single mount U shaped Bracket – to suit size 2 Premium Wheel Chock

MIRRORS

Interior Convex Mirror

The Interior Convex Mirror is perfect for both traffic and pedestrian blind spots indoor.



PRODUCT CODE	SIZE
CMINT350	350mm Ø
CMINT450	450mm Ø
CMINT600	600mm Ø
CMINT800	800mm Ø

Exterior Convex Mirror

The Exterior Convex Mirror's tough polycarbonate construction is perfect for outdoor applications.



PRODUCT CODE	SIZE
CMEXT450	450mm Ø
CMEXT600	600mm Ø
CMEXT800	800mm Ø
CMEXT1000	1000mm Ø
CMEXT1200	1200mm Ø

SITE VEHICLE SAFETY

WHEEL STOPS

Designed to inhibit encroachment into an opposing parking space, or contact with high curbs. Suitable for both outdoor and undercover parking areas.

MAXSafe® Wheel Stops are moulded from a tough, recycled rubber compound and are finished with highly visible yellow marker plates. Complies with Australia Standard AS2890.1:2004

FIXING: 3 x 20mm Dia. fixing points

DIMENSIONS: 1650mm L x 160mm H x 110mm W

WEIGHT: 16 kg



RWS1650

Asphalt Spikes

Simply hammer into any asphalt surface



PRODUCT CODE	DESCRIPTION
--------------	-------------

RWS1650	MAXSafe® Wheel Stops
RWS	Asphalt spikes (Set of 3)

SPEED HUMPS

Speed Humps Standard Duty Rubber

A modular speed control system consisting of 500mm body and 180mm end modules. The modules are manufactured from high quality, natural rubber and come in either yellow or black. When laid in an alternating pattern they meet the Australian Standards for colour, height, shape and ramp angle. Suitable for car parks, schools, shopping centres or factory complexes.



PRODUCT CODE	DESCRIPTION
--------------	-------------

SPD500Y	500mm Body module - Yellow
SPD500B	500mm Body module - Black
SPDE5Y	180mm End module - Yellow
SPDE5B	180mm End module - Black

PREMIUM SPEED HUMPS

- ✓ Conforms to AS/NZS 2890.1:2004
- ✓ Made from premium natural rubber
- ✓ UV stable colour for durability
- ✓ Built in reflectors for night time visibility
- ✓ Anti-slip pattern on all surfaces



Lightweight, easy install sections

PROD.CODE	DESCRIPTION	DIMENSIONS	WEIGHT
MAX-SHEB	End Cap - Black	320 x 200 x 50mm H	2 kg
MAX-SHEY	End Cap - Yellow	320 x 200 x 50mm H	2 kg
MAX-SHMB	Middle Section - Black	320 x 250 x 50mm H	4 kg
MAX-SHMY	Middle Section - Yellow	320 x 250 x 50mm H	4 kg

We reserve the right to change the product specification without notice.