



Accumax
Global Pty Ltd

Providing solutions to manage & reduce RISK!

Edition 4



MAXSafe 

EMERGENCY SHOWER

& EYE/FACE WASH EQUIPMENT

MAXBund 

MAXSorb 

MAXChock 

TABLE OF CONTENTS

Emergency Shower, Eye & Face Wash	2
Shower & Eye/Face Wash Accessories	4
Eye Wash	5
Dual Eye Personal Eye Wash	6
Mobile Safety Shower and Eye Wash	8

AXION® MSR EYE/FACE WASH - PEDESTAL MOUNT

- Pedestal unit
- Zero Vertical Velocity™ stream engineering with even laminar flow
- 32mm stainless steel pipework

With Stainless Steel Bowl

- 304 stainless steel AXION® MSR eye/face wash head
- Round 28 cm, 304 stainless bowl
- Available with stainless steel dust cover

PRODUCT CODE: AM-H7777

With Plastic Bowl

- AXION® MSR eye/face wash head
- Round 28 cm, green ABS plastic bowl

PRODUCT CODE: AM-7261

Add Foot Pedal

PRODUCT CODE: AM-SP220



SIGNS

- Emergency eye/face wash sign
- Emergency shower
- 400 mm x 300 mm Colourbond
- Signage to AS1319



PRODUCT CODE	DESCRIPTION
505M	Emergency Shower
506M	Emergency Eye Wash

EMERGENCY SHOWER, EYE & FACE WASH

FLOOR MOUNTED COMBINATION UNIT WITH DRENCH SHOWER & EYEWASH

The Combination Safety Shower & Eyewash Unit saves space and fits easily into any work environment, allowing workers to flush away hazardous substances that can cause injury. The shower valve operates quickly by a pull rod with a round handle.

With Plastic Showerhead

- 8" Dia CYCOLAC® yellow plastic showerhead
- 1-1/4" IPS steel piping with brass fittings stanchion

PRODUCT CODE: AM-SHE

With Stainless Steel Showerhead

- 10" 304 stainless steel showerhead
- Complies to EN 15154-1&2, AS 4775:2007, ANSI Z358.1-2014

PRODUCT CODE: AM-SS-SHE



AXION® EMERGENCY SHOWER, EYE/FACE WASH

- AXION MSR eye/face wash head assembly
- AXION hydrodynamic shower design
- Zero Vertical Velocity™ stream engineering with even laminar flow.
- Stainless steel push handle and pull rod
- In-line strainer and ball valves with stainless steel ball and stem
- 32mm stainless steel pipework

With Stainless Steel Bowl

- Round 28 cm, 304 stainless steel bowl

PRODUCT CODE: AM-H8300

With Stainless Steel Bowl and Cover

- Round 28 cm, 304 stainless steel bowl and cover

PRODUCT CODE: AM-H8330-SS

No Bowl

- SS shower spray nozzle

PRODUCT CODE: AM-8317



Add Foot Pedal

PRODUCT CODE: AM-SP220



SHOWER & EYE/FACE WASH ACCESSORIES

SHOWER CURTAINS WITH MOUNTING BRACKET



PRODUCT CODE:
AM-AP250-015



PRODUCT CODE:
AM-9037
with Tyvek liner

GREEN LED LIGHT

PRODUCT CODE: AM-LEDRLF



WIRELESS MONITORING – ALARM SOLUTIONS

WIRELESS SUPERIOR EMERGENCY RESPONSE DUAL WIRELESS TRANSMITTERS

The 9003N Honeywell Limitless® ID product line combines the best of Honeywell MICRO SWITCH® ID limit switches with the latest commercial, off-the-shelf wireless technology which can be used with most Haws shower or eyewash products.

This series is especially beneficial for remote monitoring applications where wiring or wire maintenance is not physically possible or economically feasible. Combining this greater flexibility with proven harsh-duty packaging can result in increased efficiencies and improved safety for machines, equipment, OEMS, and operators.



PRODUCT CODE:
EU-9003N

SHOWER HEADS

ABS Plastic Emergency Shower Head

AXION® MSR ABS plastic emergency showerhead with integral 75.7 L flow control.



PRODUCT CODE: AM-SP829

Stainless Steel Emergency Shower Head

AXION® MSR stainless steel emergency showerhead with integral 75.7 L flow control.



PRODUCT CODE: AM-SP829SS

SHOWER TEST KIT

PRODUCT CODE: 9010



TEST CARD

Test card with space for date and initials of inspector.

- 25 per pack.
- Includes zip ties.



PRODUCT CODE: AM-SP170

ANTISCALD VALVE



Protects emergency showers from over temperature conditions.

PRODUCT CODE: AM-HAT-SP

Protects emergency showers, valves and pipework from freeze damage.

PRODUCT CODE: AM-HAT-FP

EYE WASH

AXION® EYEPOD

The AXION eyePOD is a unique thermostatically controlled, low profile tap or spout mounted eyewash delivering an innovative and convenient, medically superior solution to remove eye contaminants by duplicating the methodology recommended and used by medical professionals. Once installed, a simple rotation of the front section of the AXION eyePOD transforms normal tap capability into a fully functional and compliant AS4775 and ANSI Z358.1 eyewash station. The polished stainless steel surface compliments existing sink installations and is rugged enough for any industrial application.



PRODUCT CODE:
AM-7620

FEATURES

- ✓ Inverted directional laminar flow
- ✓ Built-in thermostatic safety
- ✓ Easy installation



GRAVITY FED PORTABLE EYEWASH

Gravity Fed Eye Wash Stations are designed to be used in situations where a persons eyes have been exposed to hazardous or corrosive materials and a continuous supply of water is not available.

The Eye Wash unit can be installed in a wide variety of locations. Seconds can make the difference and the versatility of the Gravity Fed Portable Eyewash increases the chance of preventing serious eye injury.

- 2.6 L/min Flow Speed
- Contains two ABS spray heads with rubber dust covers
- Easy to use, just pull the rubber strap to activate
- Complies with AS 4775
- Drainage hole at the base of the unit makes it easy to discharge & clean

PRODUCT CODE	DESCRIPTION	CAPACITY	FLUSH TIME
AM-S7500	comes with Wall Mounting Bracket	60 L	18 minutes
AM-S7501	comes with Wall Mounting Bracket	30 L	9 minutes
AM-S7502	comes with trolley and locking breaks on wheels	60 L	18 minutes



AM-S7502



AM-S7501



AM-S7500

DUAL EYE PERSONAL EYEWASH

WE COVER THE ENTIRE SPECTRUM

YOU ONLY HAVE TWO EYES – TAKE CARE OF THEM

Your eyesight is one of the most important senses. So take care of your eyes. Regardless how careful you are, accidents can happen, but everybody can make sure that they are prepared. With our eye wash solutions, you have done your best.

The green Saline Eye Wash deals with dirt. The blue pH Neutral is crucial in connection with accidents involving acids and alkali.

If an accident happens, seconds can decide whether your eyesight is damaged or not. Therefore, quick access to eye wash is crucial for all workplaces where there are risks of eye injuries.



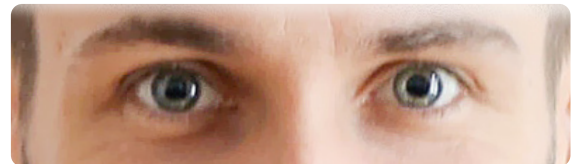
A WIDE RANGE OF UNIQUE RINSING SOLUTIONS

Our wide product range ensures the best possible solution specifically for your needs. Choose small and large wall-mounted stations directly at the workplace. Or small, mobile solutions for the van, the tool box and the first aid box, and on the cleaning trolley in the special belt bag.



HOW TO PREVENT EYE INJURIES

Our concepts have been developed in close collaboration with skilled eye specialists. This means that the products have been thought out down to the smallest detail. They are easy to use with clear pictograms showing the correct use. The eye cup helps keep the eye open. The rinsing liquid hits the eye in the right place and with the right amount in a soft and even flow.



Saline Eye Wash removes foreign objects like dust and dirt from your eye, while pH Neutral will neutralize acids and alkali



Duo Eye Wash is easy to use if an accident happens



Turn the eye cup in the direction of the arrow until the seal breaks



Lean back, squeeze the bottle and rinse



The eye can also be rinsed while you lean forward, by squeezing the bottle gently

1000 ML SALINE EYE WASH DUO

Bottle with 0.9% sterile sodium chloride. Contains 1000ml eye wash, which provides a longer rinsing effect. The ergonomic DUO eye cup makes it possible to rinse both eyes at the same time. The bottle can be used individually or as refill at DUO eye wash stations and boxes.

RINSING TIME: about 5 mins

PACKAGING: 1

PRODUCT CODE: AM-H7584



SALINE EYE WASH STATION DUO – WALL MOUNT

Wall station with 1000ml Saline Eye Wash DUO.

Particularly suitable for small and mobile workplaces where prolonged rinsing of both eyes may be required.

RINSING TIME:

about 5 mins

PACKAGING: 1

DIMENSIONS:

375mm H x 180mm W
x 95mm D

PRODUCT CODE: AM-H7543



500 ML pH NEUTRAL EYE WASH DUO

A handy bottle with 4.9% sterile phosphate buffer that will quickly neutralize acids and alkali. The ergonomic DUO eye cup makes it possible to rinse both eyes at the same time. It is particularly suitable for workplaces where there is a risk that both eyes are affected. The bottle can be used individually or as refill at eye wash stations and boxes.

RINSING TIME: about 2 mins

PACKAGING: 1

PRODUCT CODE: AM-H7583



SALINE / pH COMBI-STATION DUO – WALL MOUNT

Wall station with 500 ml pH Neutral Eye Wash DUO and 1000 ml Saline Eye Wash DUO. Particularly suitable for places where there are risks for both eyes to be affected by foreign bodies, acids, and alkali.

RINSING TIME:

- pH Neutral Eye Wash Duo about 2 mins.

- Saline Eye Wash Duo about 5 mins

PACKAGING: 1

DIMENSIONS:

377 mm H x
250 mm W x 95 mm D

PRODUCT CODE:

AM-H7541



COMBI-BOX DUO MAXI – WALL MOUNT

Dust-proof wall station in impact-proof polystyrene with 500ml pH Neutral Eye Wash DUO and 1000ml Saline Eye Wash DUO. Particularly suitable for dusty production areas where there are risks for both eyes to be affected by accidents involving foreign bodies, acids and alkali.

RINSING TIME:

- pH Neutral Eye Wash Duo about 2 mins

- Saline Eye Wash Duo about 5 mins

PACKAGING: 1

DIMENSIONS: 357 mm H x
252 mm W x 116 mm D

PRODUCT CODE: AM-H7554



MOBILE SAFETY SHOWER AND EYE WASH

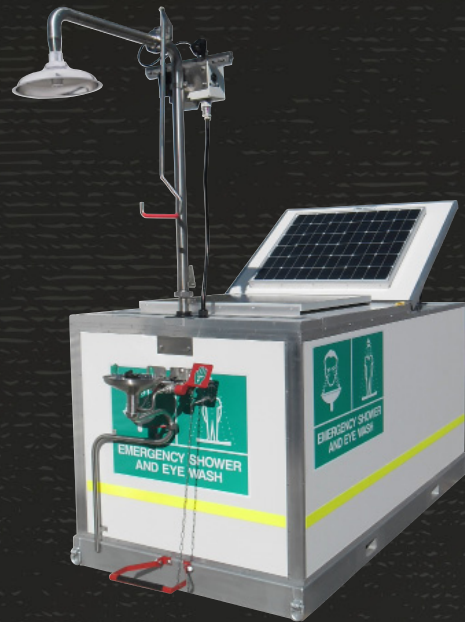
This completely self-contained, Mobile Safety Shower and Eyewash Station has been designed for use in remote area applications. Designed and made in Australia, the units are fully trailer mountable and are either Battery Powered or Solar Powered, with enclosed 1500L water tanks.

The Solar Powered station has twin 80W solar cells which keep the 235 amp battery fully charged, even in shady or cloudy conditions.

The Battery Powered station, when charged, can run the emergency shower and eye wash for up to 40 hours.

FEATURES

- ✓ Stainless Steel fold up Shower
- ✓ Stainless Steel fold up Eye/Face Wash
- ✓ 1500 Ltr Water Tank
- ✓ 5mm Colorbond Steel Skin
- ✓ 235 amp deep cycle battery
- ✓ Battery isolation switch
- ✓ Battery power level indicator
- ✓ Green LED light on shower head
- ✓ Water level and temperature gauge
- ✓ Full signage and reflective tape
- ✓ Skid mount for transport
- ✓ Cyclone rated



PRODUCT CODE	CAPACITY	DESCRIPTION
MAX-MSSHBP	1500L	Battery Powered
MAX-MSSHBP-TM	1500L	Battery Powered - Trailer Mounted
MAX-MSSHSP	1500L	Solar Powered
MAX-MSSHSP-TM	1500L	Solar Powered - Trailer Mounted

FEATURES DEPENDING ON UNIT TYPE:

- ✓ Solar panels
- ✓ Galvanised 2 tonne tandem axle trailer

We reserve the right to change the product specification without notice.